



- Gas-proofed for use on tankers.
- Manufactured from Aluminium with an aluminium alloy crutch and pedestal and non-ferrous fittings.
- Available with 2kw or 3kw lamps.
- 610mm diameter mirror, plate glass parabola split into 2 halves on hinged frames with external hand operating gear to permit varying beam divergence.
- Fitted with changeover lamp system, in the event of failure.
- Heat resistant black interior, grey stove-enamel exterior.
- Pressure relief valve and exhaust cock for connection to a 8 metres flexible exhaust hose.

Application

FRANCIS FL range searchlights incorporate design features based on the company's wide and varied experience over many years in the most demanding product operating environments on land on sea.

The designs are consistent with the quality standards set by FRANCIS as a world market leader and the greatest attention has been paid to detail to ensure the company's reputation is maintained and enhanced.

These dual purpose split or single beam searchlights are built to the Suez Canal Authority Specification and are obligatory for ships passing through the canal.

The Francis Suez Canal Searchlights are all fitted with changeover lamp system, one operational and one spare for use in the event of failure.

Each Searchlight is accompanied by a certificate.



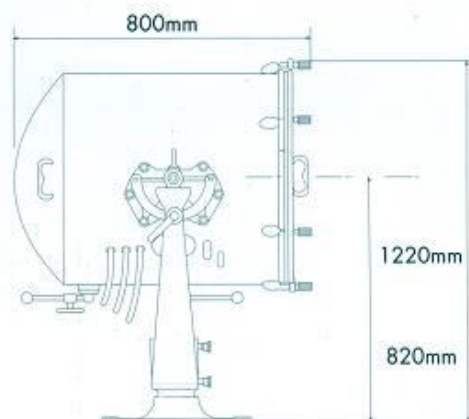
Specification

- All Aluminium construction with non-ferrous fittings.
- Parabolic glass reflector.
- Gas proofed for use on tankers.
- Fitted with changeover lamp system, in event of failure.
- Heat resistant black interior, grey stove-enamel exterior.
- Available with 2kw or 3kw lamps.
- Will withstand the effects of sea water and maximum temperature of the projector lamp.
- External hand operating gear to permit varying beam divergence.
- Single beam 5°-10°. Split beam of two 5° sections with 0°-10° dark centre.*
- Fitted with pressure relief valve and exhaust cock, for connection to a 8 metre length of flexible exhaust hose.

* Divergence in degrees.

FL 710 D (SUEZ) FL 710 D (SUEZ)

SEARCHLIGHT



OVERALL WIDTH 960mm



BASE FIXING

- 4 holes 20.5mm DIA on a 422mm Pitch circle DIA
- Weight: 63.5 kgs

DESPATCH NUMBER A2178

MIRROR DIA.		LAMP DETAILS						
Inch	mm	Volts	Watts	Lamp ref.	Lamp cap	Francis No.	Hor.	
24	610	115v	2000w	CP41	Bi-Post G38	D1823	5°	
		115v	3000w	HX48	Bi-Post G38	D9843	5°	
		220v	2000w	CP41	Bi-Post G38	D4604	6°	
		240v	2000w	CP41	Bi-Post G38	D1839	6°	
		220v	3000w	HX48	Bi-Post G38	D9841	6°	
		240v	3000w	HX48	Bi-Post G38	D9842	6°	

SINGLE BEAM		RANGE		DIVERGENCE		SPLIT BEAM RANGE	
Vert.	P.B.C.P.	Metres	Hor.	Vert.	Centre Angle	P.B.C.P.	Metres
2.5°	4,945,000	2,212	5°	2.5°	0-10°	2,472,500	1,563
3°	5,796,000	2,600	5°	3°	0-10°	2,898,000	1,600
3°	3,719,000	1,946	6°	3°	0-10°	1,859,500	1,383
4°	3,718,000	1,942	6°	3°	0-10°	1,859,000	1,381
4°	4,820,000	2,589	6°	4°	0-10°	2,410,900	1,585
4°	4,821,000	2,600	6°	4°	0-10°	2,410,950	1,600

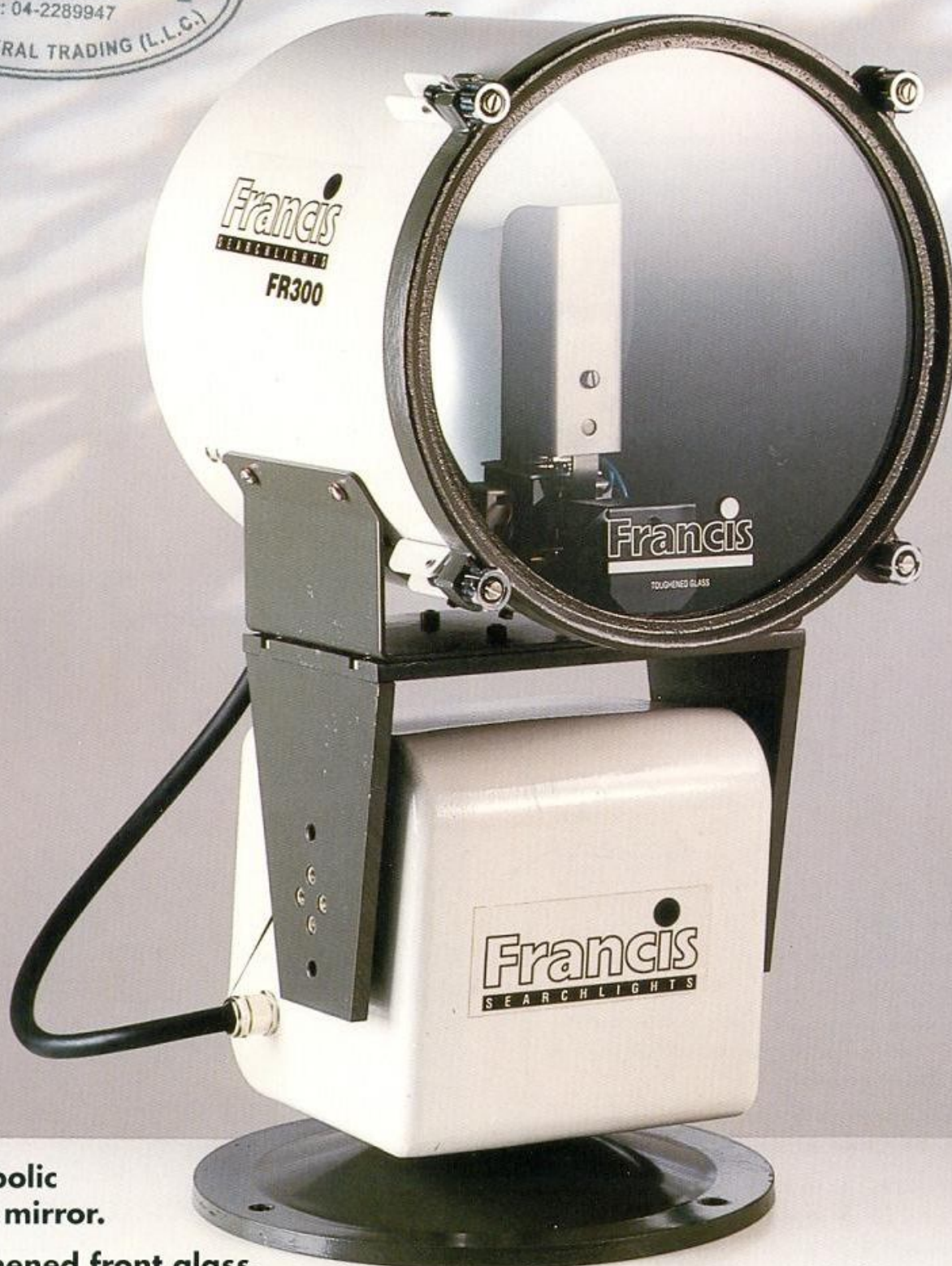
OPTIONAL ACCESSORIES

Item	Francis Ref. No.
Switched interlocking socket for power supply (Bulkhead mounting)	CO2066-00
3 pin plug connector for CO2066-00	CO2061-00

Francis

SEARCHLIGHTS

FR 300 RC
DISCOVERY



- Parabolic glass mirror.
- Toughened front glass.
- Supplied with control panel.
- Tungsten halogen light source.
- Marine specification paint finish.
- Remote focus adjustment as standard.

Application

Francis FR range searchlights incorporate design features based on the Company's wide and varied experience over many years in the most demanding product operating environments on land and sea.

The designs are consistent with the quality standards set by Francis as a world market leader and the greatest attention has been paid to detail, to ensure the company's reputation is maintained and enhanced.

The FR 300 RC DISCOVERY has excellent illumination characteristics, a powerful yet functional beam pattern and is fully focusable, the design incorporates an electrically powered remote focus mechanism as a standard feature.

This unit is particularly suitable for patrol craft, customs vessels and security installations.

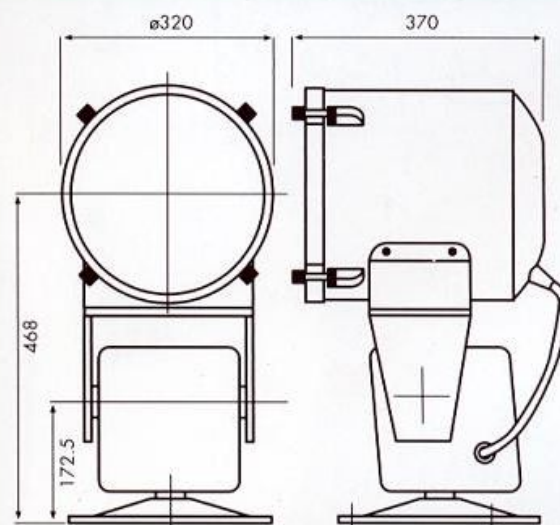
Specification

Voltage	Range (metres)	PBCP (x1000)	*Div	Watts	Lamp Cap	Lamp Despatch Number
24v	1170	1325	2°	150	G6.35	D3047
	1490	2220	3°	250	G6.35	D3046
115v	910	830	5°	650	GX9.5	D9858
	1000	1000	5°	1000	GX9.5	D1809
220v	905	820	5°	650	GX9.5	D9855
	970	940	5°	1000	GX9.5	D6715
240v	905	820	5°	650	GX9.5	D1813
	970	940	5°	1000	GX9.5	D1814

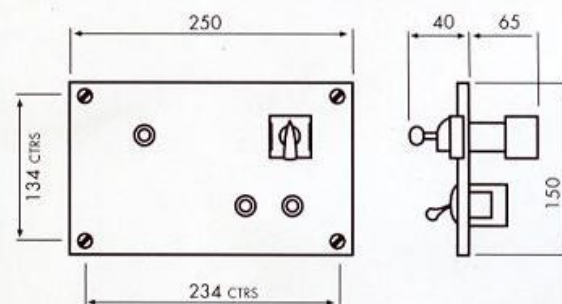
* - Divergence in degrees inclusive angle.

- Parabolic glass mirror.
- Marine specification paint finish.
- Toughened front glass.
- Effective weather sealing: Gearbox housing IP66 (IEC 529)
Searchlight housing IP56 (IEC 529)
- Tungsten halogen light source.
- Remote focus adjustment as standard.
- Elevation control +20° to -90° (adjustable within this range).
- Horizontal rotation 350° maximum.
- Rotation speed 4.8° per second.
- Elevation speed 2.4° per second.
- Operational ambient temperature range -20°C to +70°C.
- Optional Heaters to -30°C.
- Supplied with control panel incorporating joystick control, focus control and on/off switch.
- Light shield prevents unwanted glare and stray light.
- 50/60hz power supply.

FR 300 Remote Control



SEARCHLIGHT

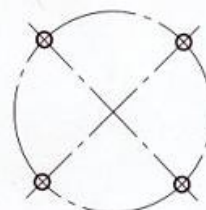


REMOTE CONTROL PANEL

All dimensions in millimetres

BASE FIXING

4 holes Ø14.5mm
equispaced on
270mm P.C.D.



WEIGHT: 30 Kgs approximately

DESPATCH NUMBERS

Type	Finish	Searchlight Despatch Number	
		Lampholder Type	
		GX6.35 Low Voltage	GX9.5 High Voltage
FRC 300 RC (24v)	Paint	A2990	-
FRC 300 RC (115v)	Paint	-	A2991
FRC 300 RC (240v)	Paint	-	A2992

Pedestal standard height 1 metre [part number C1532401]
is available as an optional extra.

Francis

SEARCHLIGHTS



FR
230mm



- Fully focusable.
- Suitable for smaller boats, fishing/coast guard vessels, police launches, larger leisure craft and certain military vehicles.
- Range from 760-860 metres.
- 12/24v, 100/150w.
- Full 360° horizontal rotation.
- Vertical movement +35° -30°.
- Tungsten halogen lamp, all brass construction.
- Wiring gland in deck base.

Application

FRANCIS FR range searchlights incorporate design features based on the company's wide and varied experience over many years in the most demanding product operating environments on land on sea.

The designs are consistent with the quality standards set by FRANCIS as a world market leader and the greatest attention has been paid to detail to ensure the company's reputation is maintained and enhanced.

The FR range of searchlights include 230mm, 280mm, 300mm, 380mm, and 560mm diameters with a wide choice of mountings, lamp sizes, operating voltages and power consumption.

All lights in this range have excellent illumination characteristics, a powerful, yet functional, beam and are fully focusable.

These units are particularly suitable for smaller boats, fishing vessels, police launches, coast guard vessels, larger leisure craft and certain military vehicles.

Water proof covers available.



Specification

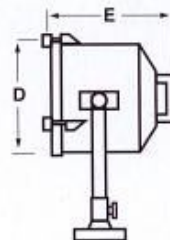
Voltage	Searchlight Size	Range (metres)	PBCP (x1000)	*Div	Watts	Lamp Cap	Lamp Despatch Number
12v	FR 230	760	600	3	100	G6.35	D3018
24v	FR 230	860	740	3	150	G6.35	D3047

- All brass construction.
- Parabolic glass reflector.
- Paint or chrome finishes.
- External lamp focus adjustment.
- Captive bezel/glass.
- Wiring gland in deck base.
- Effective weather sealing on control stem and base.
- Light shield to prevent unwanted glare and stray light.
- Tungsten halogen lamps.
- Enclosure protection to IP 56 (BS 5490) IEC 529.
- Special 'B' dimensions (to suit customer requirements) are available on request.
- Full 360° degree rotation.
- Vertical movement +35° -30°.

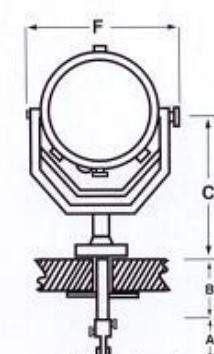
* Divergence in degrees.

230mm ... 230mm ... 230mm ...

SEARCHLIGHT



DECK



CABIN

BASE FIXING

- 3 holes 14.5 on 154 P.C.D.

DIMENSIONS

FR 230	A mm	B*† mm	C mm	C ₂ mm
	150	185	360	-
	D mm	E mm	F Width Deck mm	F width Cabin mm
	230	250	310	275

* B dimension can be altered to suit customer requirements.

† B dimension is measured from underneath the base to the top of the elevation lockwheel and operating clearance should be allowed for when considering B dimension changes.

WEIGHTS

	Mounting Types			
	D	C	DP	CP
FR 230	kg	kg	kg	kg
	9.8	12.1	-	-

DESPATCH NUMBERS

Type and Diameter	Mounting	Mntg Code	Finish	Searchlight Despatch Number		
				Lampholder Type		
				GX6.35	GX9.5	G38
				Low Voltage	High Voltage	
FR 230 (230mm)	Deck	D	Grey Chrome	A2808 A2832		
	Deck (Cabin Control)	C	Grey Chrome	A2810 A2834		

Francis

SEARCHLIGHTS



FR
280mm



- Fully focusable.
- Suitable for police launches, coast guard vessels, trawlers, lifeboats and even larger leisure craft.
- Range from 1000-1360 metres.
- 12/24v, 100/250w.
- Full 360° horizontal rotation.
- Vertical movement +45° -25°.
- Tungsten halogen lamp, all brass construction.
- Wiring gland in deck base.

Application

FRANCIS FR range searchlights incorporate design features based on the company's wide and varied experience over many years in the most demanding product operating environments on land and sea.

The designs are consistent with the quality standards set by FRANCIS as a world market leader and the greatest attention has been paid to detail to ensure the company's reputation is maintained and enhanced.

The FR range of searchlights include 230mm, 280mm, 300mm, 380mm, and 560mm diameters with a wide choice of mountings, lamp sizes, operating voltages and power consumption.

All lights in this range have excellent illumination characteristics, a powerful, yet functional, beam and are fully focusable.

These units are particularly suitable for police launches, coast guard vessels, trawlers and larger leisure craft.



Specification

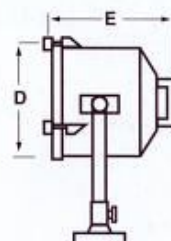
Voltage	Searchlight Size	Range (metres)	PBCP (x1000)	*Div	Watts	Lamp Cap	Lamp Despatch Number
12v	FR 280	1000	990	3	100	G6.35	D3018
24v	FR 280	1050	1110	3	150	G6.35	D3047
24v	FR 280	1360	1800	3	250	G6.35	D9851

- All brass construction.
- Parabolic glass reflector.
- Paint or chrome finishes.
- External lamp focus adjustment.
- Captive bezel/glass.
- Wiring gland in deck base.
- Effective weather sealing on control stem and base.
- Light shield to prevent unwanted glare and stray light.
- Tungsten halogen lamps.
- Enclosure protection to IP 56 (BS 5490) IEC 529.
- Special 'B' dimensions (to suit customer requirements) are available on request.
- Full 360° horizontal rotation.
- Vertical movement +45° - 25°.

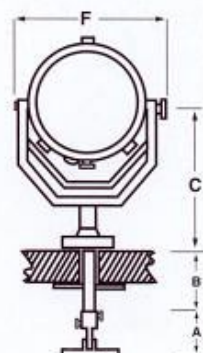
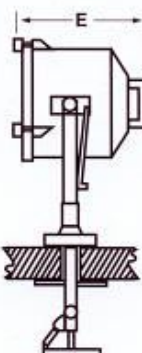
* Divergence in degrees.

280mm ... 280mm ... 280mm ...

SEARCHLIGHT



DECK



CABIN

BASE FIXING

- 3 holes 14.5 on 154 P.C.D.

DIMENSIONS

	A	B*†	C	C ₂
FR 280	mm 150	mm 185	mm 385	mm —
	D	E	F Width Deck	F width Cabin
	mm 280	mm 250	mm 350	mm 335

* B dimension can be altered to suit customer requirements.

† B dimension is measured from underneath the base to the top of the elevation lockwheel and operating clearance should be allowed for when considering B dimension changes.

WEIGHTS

	Mounting Types			
	D	C	DP	CP
	kg	kg	kg	kg
FR 280	12.8	14.6	—	—

DESPATCH NUMBERS

Type and Diameter	Mounting	Mntg Code	Finish	Searchlight Despatch Number		
				Lampholder Type		
				GX6.35	GX9.5	G38
				Low Voltage	High Voltage	
FR 280 (280mm)	Deck	D	Grey Chrome	A2812 A2836		
	Deck (Cabin Control)	C	Grey Chrome	A2814 A2838		



- Fully focusable.
- Suitable for tugs, small cargo vessels, bridge wing docking and navigation lights on larger vessels, security and guard towers.
- Range from 905–1490 metres.
- 12/24v, 115/240v, 100/1000w.
- Full 360° horizontal rotation.
- Vertical movement +45° –25°.
- Tungsten halogen lamp, all brass construction.
- Wiring gland in deck base.

Application

FRANCIS FR range searchlights incorporate design features based on the company's wide and varied experience over many years in the most demanding product operating environments on land and sea.

The designs are consistent with the quality standards set by FRANCIS as a world market leader and the greatest attention has been paid to detail to ensure the company's reputation is maintained and enhanced.

The FR range of searchlights include 230mm, 280mm, 300mm, 380mm, and 560mm diameters with a wide choice of mountings, lamp sizes, operating voltages and power consumption.

All lights in this range have excellent illumination characteristics, a powerful, yet functional, beam and are fully focusable.

These units are particularly suitable for use on tugs, small cargo vessels, also as bridge wing docking and navigation lights on larger vessels, security and guard towers.

Water proof covers available.

Specification

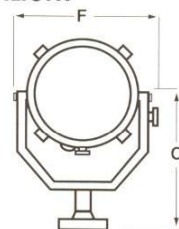
Voltage	Searchlight Size	Range (metres)	PBCP (x1000)	*Div	Watts	Lamp Cap	Lamp Despatch Number
12v	FR 300	1080	1210	2	100	G6.35	D3018
24v	FR 300	1170	1325	2	150	G6.35	D3047
		1490	2220	3	250	G6.35	D9851
115v	FR 300	910	830	5	650	GX9.5	D9858
		1000	1000	5	1000	GX9.5	D1809
220v	FR 300	905	820	5	650	GX9.5	D9855
		970	940	5	1000	GX9.5	D6715
240v	FR 300	905	820	5	650	GX9.5	D1813
		970	940	5	1000	GX9.5	D1814

- All brass construction.
- Parabolic glass reflector.
- Stove enamel painted.
- External lamp focus adjustments.
- Captive bezel/glass.
- Wiring gland in deck base.
- Effective weathersealing on control stem and base.
- Light shield to prevent unwanted glare and stray light.
- Tungsten halogen lamps.
- Enclosure protection to IP 56 (BS 5490) IEC 529.
- Special 'B' and 'C' dimensions (to suit customer requirements) are available on request.
- Full 360° horizontal rotation.
- Vertical movement +45° -25°.

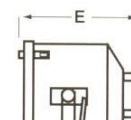
* Divergence in degrees.

300mm ... 300mm ... 300mm ...

SEARCHLIGHT



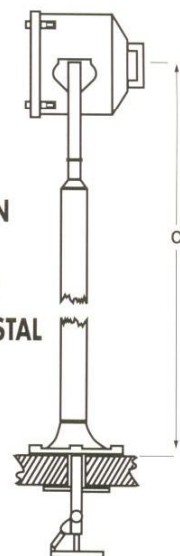
DECK



CABIN



CABIN AND DECK PEDESTAL



BASE FIXING

- Deck and Cabin. 3 holes 14.5 on 154 P.C.D.
- Deck Pedestal. } 4 holes 14.5 on 270 P.C.D.
- Cabin Pedestal. }

DIMENSIONS

	A	B*†	C1	C2
FR 300	mm 150	mm 185	mm 405	mm 1390
	D	E	F Width Deck	F width Cabin
	mm 300	mm 410	mm 401	mm 371

* B dimension can be altered to suit customer requirements.

† B dimension is measured from underneath the base to the top of the elevation lockwheel and operating clearance should be allowed for when considering B dimension changes.

WEIGHTS

	Mounting Types			
	D	C	DP	CP
	kg	kg	kg	kg
FR 300	15.5	17.8	19.4	21.6

DESPATCH NUMBERS

Type and Diameter	Mounting	Mntg Code	Finish	Searchlight Despatch Number		
				Lampholder Type		
				GX6.35	GX9.5	G38
				Low Voltage	High Voltage	
FR 300 (300mm)	Deck Deck (Cabin Control) Pedestal Pedestal (Cabin Control)	D	Grey	A2816	A2824	
		C	Grey	A2818	A2826	
		DP	Grey	A2815	A2823	
		CP	Grey	A2817	A2825	

Francis

SEARCHLIGHTS



FR
560mm



- Fully focusable.
- Suitable for large vessels, security installations, large area illumination.
- Range from 1550-2030 metres.
- 115/240v, 1000/2000w.
- Full 360° horizontal rotation.
- Vertical movement +10° -25°.
- Tungsten halogen lamp, all brass construction.
- Wiring gland in deck base.

Application

FRANCIS FR range searchlights incorporate design features based on the company's wide and varied experience over many years in the most demanding product operating environments on land and sea.

The designs are consistent with the quality standards set by FRANCIS as a world market leader and the greatest attention has been paid to detail to ensure the company's reputation is maintained and enhanced.

The FR range of searchlights include 230mm, 280mm, 300mm, 380mm, and 560mm diameters with a wide choice of mountings, lamp sizes, operating voltages and power consumption.

All lights in this range have excellent illumination characteristics, a powerful, yet functional, beam and are fully focusable.

These units are used where higher levels of illumination and longer ranges are required.

Large vessels, security installations – large area illumination.

Water proof covers available.

Specification

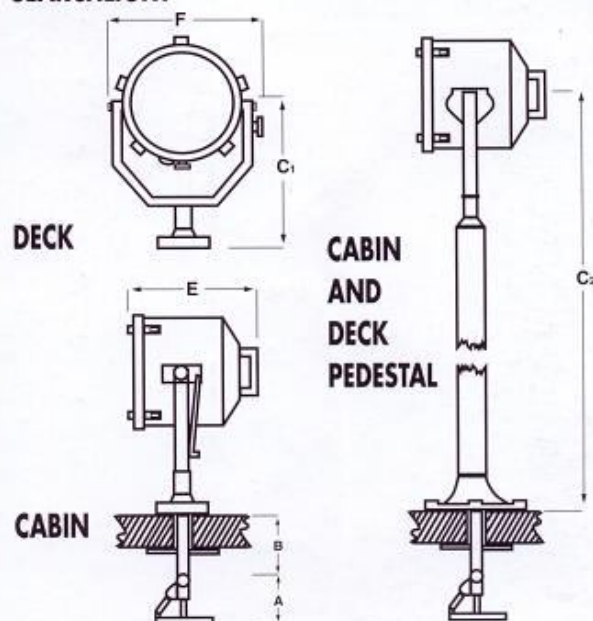
Voltage	Searchlight Size	Range (metres)	PBCP (x1000)	*Div	Watts	Lamp Cap	Lamp Despatch Number
115v	FR 560	1550	2450	5	1000	GX9.5	D1809
		2030	3900	5.5	2000	G38	D1823
220v	FR 560	1550	2450	5	1000	GX9.5	D6715
		2030	3900	5.5	2000	G38	D4604
240v	FR 560	1550	2450	5	1000	GX9.5	D1814
		2030	3900	5.5	2000	G38	D1839

- All brass construction.
- Parabolic glass reflector.
- Stove enamel paint finish.
- External lamp focus adjustment.
- Captive bezel/glass.
- Wiring gland in deck base.
- Effective weathersealing on control stem and base.
- Light shield to prevent unwanted glare and stray light.
- Tungsten halogen lamps.
- Enclosure protection to IP 56 (BS 5490) IEC 529.
- Special 'B' and 'C' dimensions (to suit customer requirements) are available on request.
- Full 360° horizontal rotation.
- Vertical movement +10° -25°.

* Divergence in degrees.

560mm ... 560mm ... 560mm ...

SEARCHLIGHT



BASE FIXING

- Deck and Cabin. 3 holes 11 on 174 P.C.D.
- Deck Pedestal. } 4 holes 14.5 on 270 P.C.D.
- Cabin Pedestal. }

DIMENSIONS

	A	B*†	C ₁	C ₂
FR 560	mm 160	mm 280	mm 581	mm 1555
	D	E	F Width Deck	F Width Cabin
	mm 560	mm 455	mm 700	mm 660

* B dimension can be altered to suit customer requirements.

† B dimension is measured from underneath the base to the top of the elevation lockwheel and operating clearance should be allowed for when considering B dimension changes.

WEIGHTS

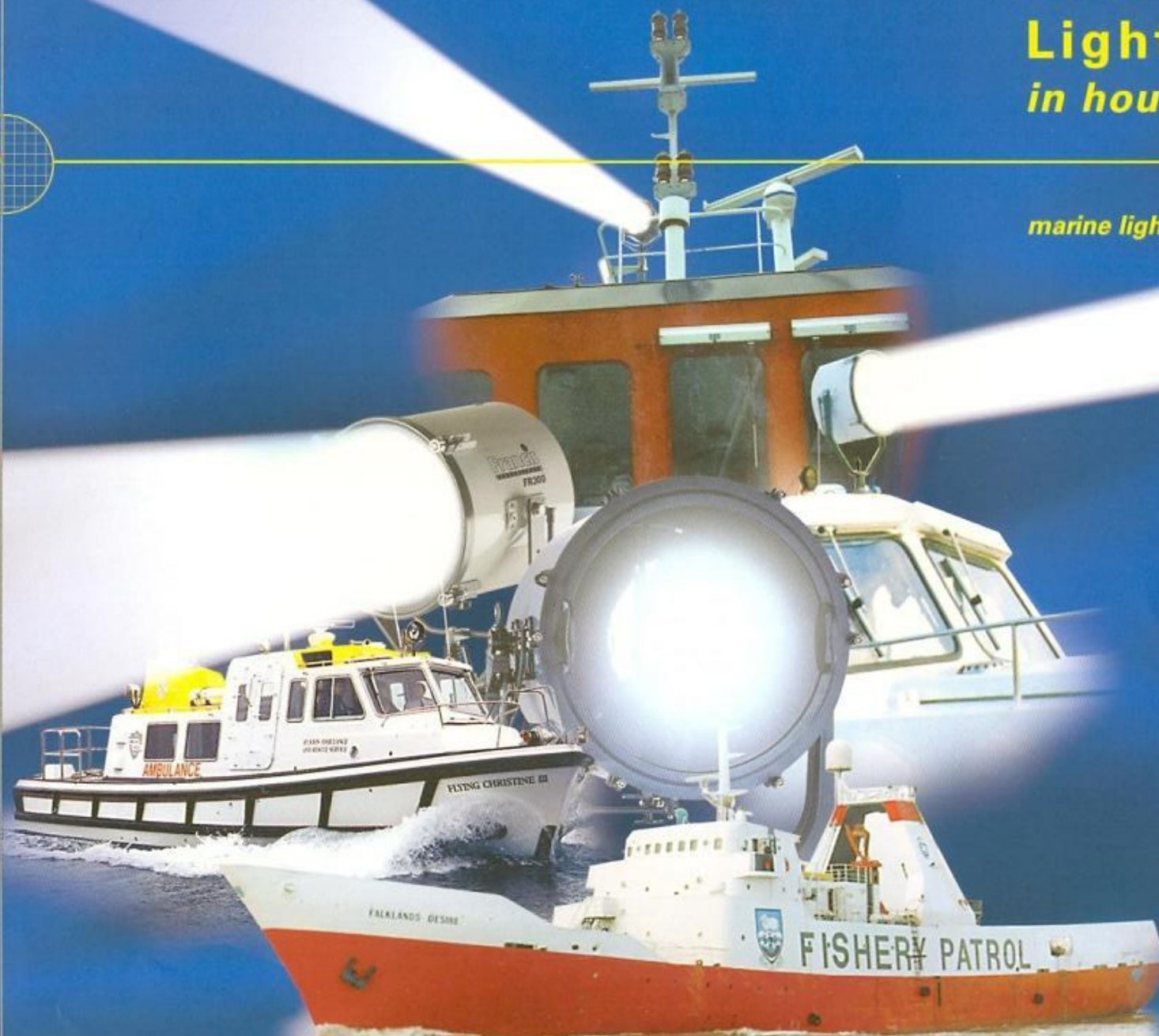
	Mounting Types			
	D	C	DP	CP
	kg	kg	kg	kg
FR 560	42.6	52.6	45.5	76.2

DESPATCH NUMBERS

Type and Diameter	Mounting	Mntg Code	Finish	Searchlight Despatch Number		
				Lampholder Type		
				GX6.35	GX9.5	G38
				Low Voltage	High Voltage	
FR 560	Deck Deck (Cabin Control)	D	Grey	-	A2886	A2890
[560mm]	Cabin Pedestal (Cabin Control)	C	Grey	-	A2888	A2892
	Deck Pedestal	DP	Grey	-	A2885	A2889
	Cabin Pedestal	CP	Grey	-	A2887	A2891

Light –
in hours of darkness

marine lighting



Francis
SEARCHLIGHTS

The logo for Francis Searchlights, featuring the word "Francis" in a large, bold, white sans-serif font, with a small yellow dot above the 'i'. Below it, the word "SEARCHLIGHTS" is written in a smaller, white, all-caps sans-serif font, enclosed within a thin white rectangular border.

Francis
SEARCHLIGHTS

In hours of darkness, lives depend on equipment to function quickly and reliably.

Searchlights are no exception. Speed is essential and light imperative to see the situation before your next move. Francis Searchlights provide the peace of mind you experience, knowing you have the best equipment for all eventualities.

M a r i n e L



Francis Searchlights are renowned the world over for quality and longevity in hostile conditions. The comprehensive range of products manufactured by Francis encompasses many special requirements and regulations. The new 560mm Suez Canal searchlight includes gas proofed construction, split beam and changeover lamp facility. The compact FSP 127 (5")

MKV signalling lantern fulfils the requirements of the "International Convention for the Safety of Life at Sea". This convention states that all ships over 150 tons (gross tonnage), when engaged on International voyages, shall have on board an efficient daylight signalling lamp which shall not be solely dependent upon the ship's main source of electrical power.





Somewhere in the world there is always a Francis searchlight illuminating a hazard, assisting a manoeuvre or helping to save a life.



ighting

Other regulations concerning ships rescue boat equipment and fire fighting ships are catered for from the standard Francis product range.



Marine vessels of every conceivable size, from the smallest launch, motor cruiser or fishing boat to the largest super tanker or ocean liner, have all benefited from the robust durability and quality associated with Francis Searchlights.



Fully focusable with full 360 degree rotation, the Francis product range can be directly mounted to the deck, deck pedestal, mechanically controlled through a cabin roof or remotely controlled units powered by electric motors.



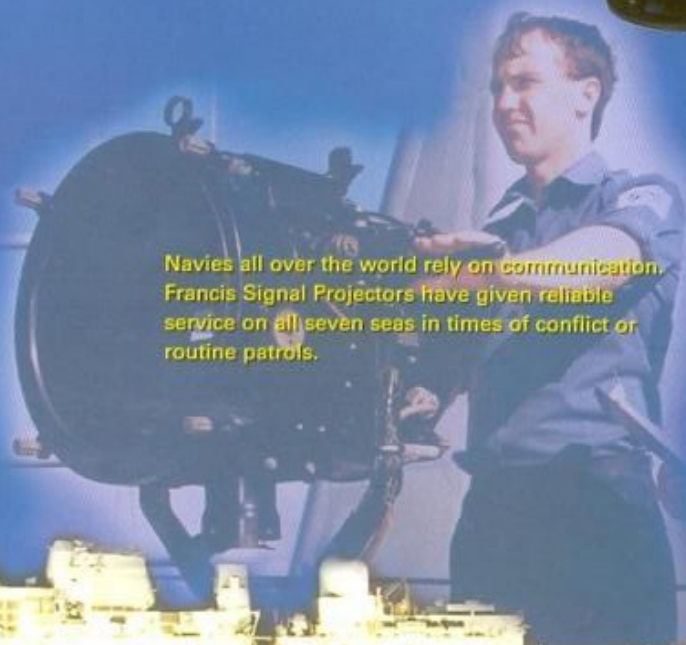
Francis
SEARCHLIGHTS



Built to exacting standards from traditional and modern marine engineering construction materials. Francis Searchlight range incorporates features that have been developed due to the company's wide and varied experience over many years building products to operate in the harshest marine environment.

Francis provide the ability to see a situation clearly and concisely with the help of 1kW to 7kW searchlights, from 180 to 710mm diameter barrels. The light source provided by a Tungsten Halogen, Metal Halide or Xenon lamps.

Navies all over the world rely on communication. Francis Signal Projectors have given reliable service on all seven seas in times of conflict or routine patrols.



To achieve night vision and obtain details on specific searchlight performance, contact:

Francis Searchlights Ltd
Union Road, Bolton BL2 2HJ UK
Telephone: + 44 (0) 1204 527196
Facsimile: + 44 (0) 1204 361567
Email: sales@francis.co.uk
www.francis.co.uk

AGENT/DISTRIBUTOR STAMP



PROFEN
GENERAL TRADING L.L.C
MARINE, INDUSTRIAL, VENTILATION &
MACHINERY EQUIPMENTS & SPARES

P. O.Box 181926, Dubai - UAE
Tel.: +971 4 2289927 Fax : +971 4 2289947
After Office Hours: 050-4516764, 050-7558270
E-mail : director@profenis.com Website: www.profenis.com

Engineering light since 19

Light-
the clear picture

*defence &
security lighting*



Francis
SEARCHLIGHTS

Francis
SEARCHLIGHTS

Without a clear picture of a situation as it unfolds, it is difficult to react precisely in tune with the events.

Today's 'high tech' law enforcement environment still lacks the most crucial element of decision making - **Visibility**.

Threatening situations can develop at a frightening speed, almost at the speed of light. To stay ever vigilant, security forces need to see the situation as it really is - only then can the threat be confirmed, measured and contained.

Courtesy of Goldtec Technologies Ltd.

Defence & Sec

Water borne

Fast patrol craft, installed with marine searchlights, can approach incidents at speed and quickly establish the registration, credentials and intentions of suspect vessels with the help of high intensity searchlight night vision.

Border Patrol

The 'International Maritime Bureau' report an increase in piracy, with vessels being boarded at night, whilst underway, as well as assisting in the fight against piracy. Strategically placed searchlights on merchant vessels navigating waters prone to piracy can increase security by eliminating blind spots.

Courtesy of Boomeranger Boats Oy

Anti-riot

Vehicle /
A surprise e
restrike capa
patrolling or
protecting w

Courtesy of GKN Defence

Anti-terrorist



Courtesy of 102 and 108 Field Squadron, Royal Engineers



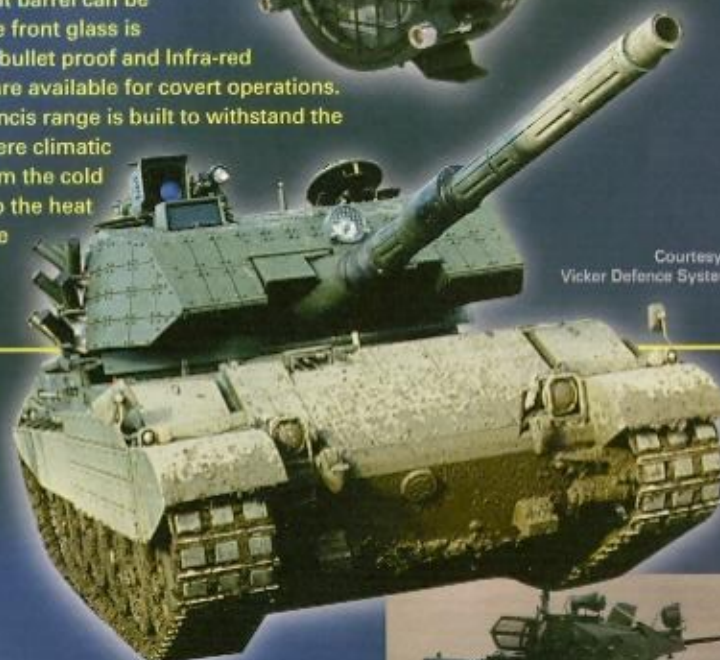
Courtesy of GKN Defence

Francis Searchlights give an important perspective to frontier protection and counter insurgency operations, the pursuit and capture of terrorists and the prevention of drug trafficking.

The searchlight barrel can be armoured. The front glass is toughened or bullet proof and Infra-red filter options are available for covert operations. The entire Francis range is built to withstand the rigours of severe climatic conditions from the cold of the Arctic to the heat and dust of the Desert.



Courtesy of Vicker Defence Systems



Armoured vehicles



Trailer mounted

ment can be established with instant strike and abilities. Robust qualities withstand rough terrain borders seeking out illegal immigrants, smugglers or life with specialist anti-poacher units.



Searchlights directly mounted to large calibre machine guns enable the gunner to clearly see and identify the target before engaging. The searchlight also allows the gun commander to ascertain when enough force has been deployed.



Courtesy of Helio Company Ltd

Surveillance



Static sited

Mounted as part of permanent installations on watch towers, at airports or other secure installations, searchlights can be manually operated through a control linkage within the tower itself. If necessary, units may be controlled remotely from a command post.



Francis provide that ability to see a situation clearly and concisely with the help of 1 kW to 10 kW searchlights, from 180 to 710 mm diameter bodies and with ranges typically from 750 to 30,000 metres. The light source emanates from Tungsten Halogen, Metal Halide or Zenon lamps protected by a composite or metallic housing.

Security



Courtesy of P.A.S.

Air borne

Helicopters are quick to respond to any incident if the aircraft is mounted with a searchlight system. Immediate action can be taken to pinpoint targets and assist ground forces as they approach to intercept.

High intensity searchlights can temporarily disorientate and incapacitate, providing valuable time for law enforcement authorities to approach and apprehend selected targets.



Courtesy of P.A.S.

To achieve the clear picture and to obtain details on specific searchlight performance contact:-

Francis Searchlights Ltd,
Union Road, Bolton BL2 2HJ

Telephone: +44 (0) 1204 527196

Facsimile: +44 (0) 1204 361567

Email: sales@francis.co.uk

Francis Searchlights B.V.
Glasblazerstraat 9a,
NL-2984 BL Riddaerk, Netherlands

Francis
SEARCHLIGHTS



PROFEN

GENERAL TRADING L.L.C

MARINE, INDUSTRIAL, VENTILATION &
MACHINERY EQUIPMENTS & SPARES

P. O.Box 181926, Dubai - UAE

Tel.: +971 4 2289927 Fax: +971 4 2289947

After Office Hours: 050-4516764, 050-7558270

E-mail: director@profenis.com Website: www.profenis.com

Francis

SEARCHLIGHTS

FSP
127mm

- Capable of maximum daylight signalling range of 8 miles.
- Beam divergence of 5°.
- Manufactured in aluminium, fully weatherproofed.
- Four metres of supply cable fitted as standard.
- Fulfils requirements of Solas (1974) regulations.
- Can be used as a spotlight.



Application

The FRANCIS FSP 127 (MKV) signalling lantern fulfils the requirements of Solas (1974) regulations, which states that "all ships of over 150 tons gross tonnage, when engaged on International voyages, shall have on board an efficient daylight signalling lamp which shall not be solely dependant upon the ship's main source of electrical power."

The 127mm (5") hand held signalling light can be used on all vessels, for ship to ship signalling using morse code.

The light is of aluminium, light weight construction and is fully weatherproofed.

If desired this unit can be used as a spot light if the signalling trigger and lamp switch are both left on.

The Francis signalling lantern is approved by the U.K. Department of Transport, Marine Directorate.



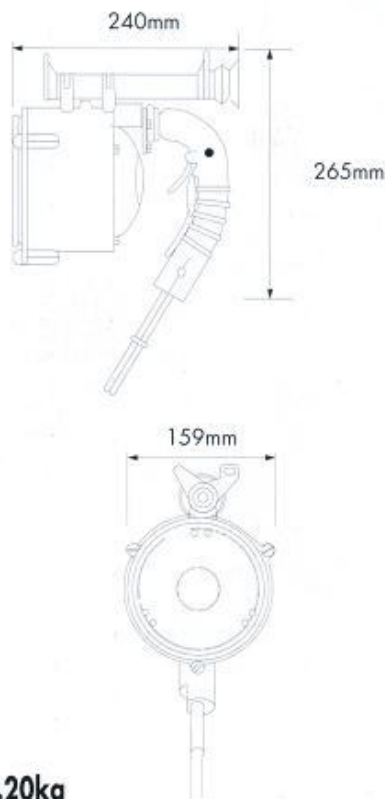
Specification

Product	MTG	Type	Despatch No.
FSP 127	H	Commercial	A 4023
FSP 127	H	MOD	A 4021
		NSN	0558-5850-99-527-7235

- Capable of maximum daylight signalling range of 8 miles.
- Beam divergence of 5°.
- Transmission rate of 12 words per minute can be achieved.
- Light reduction & coloured filters provide control of light output as required.
- 5.5 metres of supply cable fitted as standard.
- All aluminium construction fitted with a super purity aluminium parabolic reflector.
- Tubular and V sights are fitted as standard.
- Handle mounted switch to operate the lantern.
- Signals made by triggering the tubular shutter which interrupts the light from the reflector.
- Full range of accessories are available for the FSP 127 (MKV) signalling lantern.

* Divergence in degrees.

FSP 127 (MK.V) FSP 127 (MK.V)



WEIGHT: 2.20kg

DESPATCH NUMBERS

Description	Despatch No.	Finish	Weight
FSP 127 (Commercial)	A 4023	Black	2.2kgs
FSP 127 (MOD)			
NSN 0558/5850-99-527-7235	A 4021	Black	2.2kgs
11v 60w Lamp			
NSN 0584/6240-99-995-2513	D 1721	-	-
24v 60w Lamp			
NSN 0584/6240-99-995-2515	D1754	-	-
Carrying Case (Wood Construction)	C 1424	Black	3.54kgs
Stowage Box (Aluminium)			
NSN 0558/6230-99-462-4204	A 4025	Dark Grey	7.5kgs
12v Battery in case c/w 3 pin socket	C 3221	Black	5.9kgs
24v Battery in case c/w 3 pin socket	C 3938	Black	10.78kgs
Replacement 12v 18 AH Lead Acid Battery	C 6717		4.28kgs
Light Reduction Screen	C 3194	Black	-
Red Filter	C 5971	-	-
Green Filter	C 5973	-	-
Blue Filter	C 9901	-	-
Transformer 115v-12v 60w	C 1398	Grey	3.95kgs
Transformer 115v-24v 60w	C1400	Grey	3.95kgs
Transformer 220/240v-12v 60w	C 1399	Grey	3.95kgs
Transformer 220/240v-24v 60w	C 1401	Grey	3.95kgs
Battery Charger 110/240v-12v	C 1405	-	8kgs
Battery Charger 110/240v-24v	C 1406	-	8kgs
3 Pin Plug	C 2682	-	-
3 Pin Socket c/w Cap & Chain	C 2681	-	-
2 Pin Plug (MoD)	C 3012	-	-
2 Pin Socket (MoD)	C 3599	-	-



- Brass construction.
- Supply cable fitted.
- Parabolic glass mirror.
- External adjustable focus.
- Toughened front glass lens.
- Fitted 360°
floating stop mechanism.

Application

The Francis FSP 300 series signalling searchlights are available with either deck (D) or deck pedestal (DP) mountings and are suitable for most vessels that require permanently mounted day/night visual signalling equipment.

Standard features include, adjustable focus mechanism and combined tubular and V sights.

The well proven shutter mechanism can be locked in the "open" position thereby allowing the FSP 300 to be used as a searchlight.

Specification

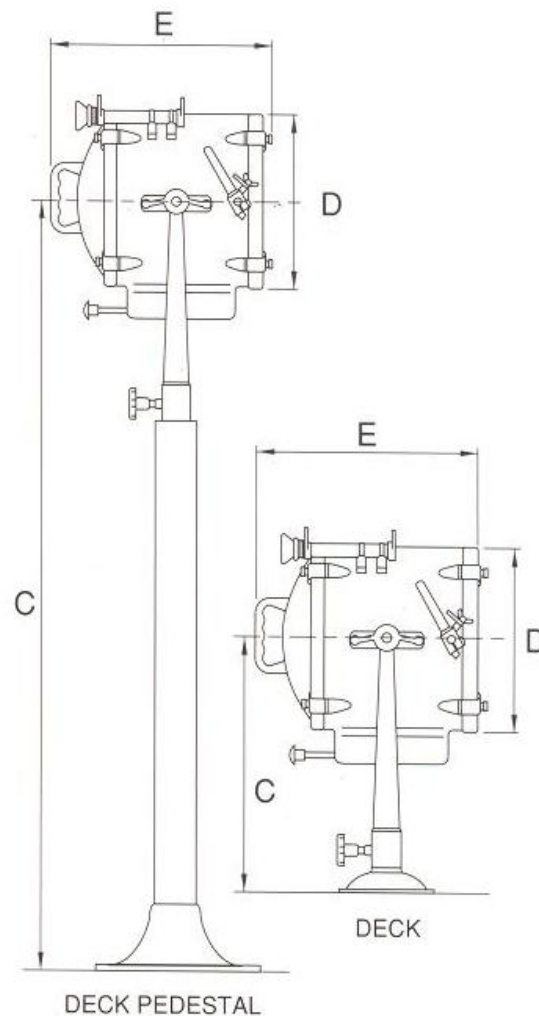
Voltage	Search-light Size	Range* (metres)	PBCP (x1000)	*Div	Watts	Lamp Cap	Lamp Despatch Number
12v	FSP 300	1080	1210	2°	100	GX6.35	D3018
24v	FSP 300	1170	1325	2°	150	GX6.35	D3047
		1490	2220	3°	250	GX6.35	D3046
115v	FSP 300	910	830	5°	650	GX9.5	D9858
		1000	1000	5°	1000	GX9.5	D1809
220v	FSP 300	905	820	5°	650	GX9.5	D9855
		970	940	5°	1000	GX9.5	D6715
240v	FSP 300	905	820	5°	650	GX9.5	D1813
		970	940	5°	1000	GX9.5	D1814

* - Ranges shown are with the FSP 300 in searchlight mode.

* - Divergence in degrees inclusive angle.

- Brass construction.
- Parabolic glass mirror.
- Removable front and rear bezels.
- Low and high voltage versions.
- External adjustable focus.
- Toughened front glass lens.
- Fitted 360° floating stop mechanism.
- Supply cable fitted.

Signalling Searchlight



BASE FIXING

- Deck 3 holes 14.5mmØ on 154mm P.C.D.
- Deck Pedestal 4 holes 14.5mmØ on 270mm P.C.D.

DIMENSIONS

	A(mm)	B(mm)	C(mm)	D(mm)	E(mm)	Width(mm)	Weight(kgs)
FSP 300D	-	-	475	340	440	560	22.4
FSP 300DP	-	-	1470	340	440	560	32.8

DESPATCH NUMBERS

Type	Mounting	Mounting Code	Finish	Searchlight Despatch N°	
				Lampholder Type	
				GX6.35 Low Voltage	GX9.5 High Voltage
FSP 300	Deck	D	Two-Tone Grey Paint	A4161	A4162
FSP 300	Deck Pedestal	DP	Two-Tone Grey Paint	A4169	A4170

Francis
SEARCHLIGHTS



M9/M10
180mm

- Solas approved.
- Toughened front lens glass.
- All round horizontal rotation.
- Polished and electro-brightened reflector.
- Manufactured from sea water resistant silicon aluminium alloy.



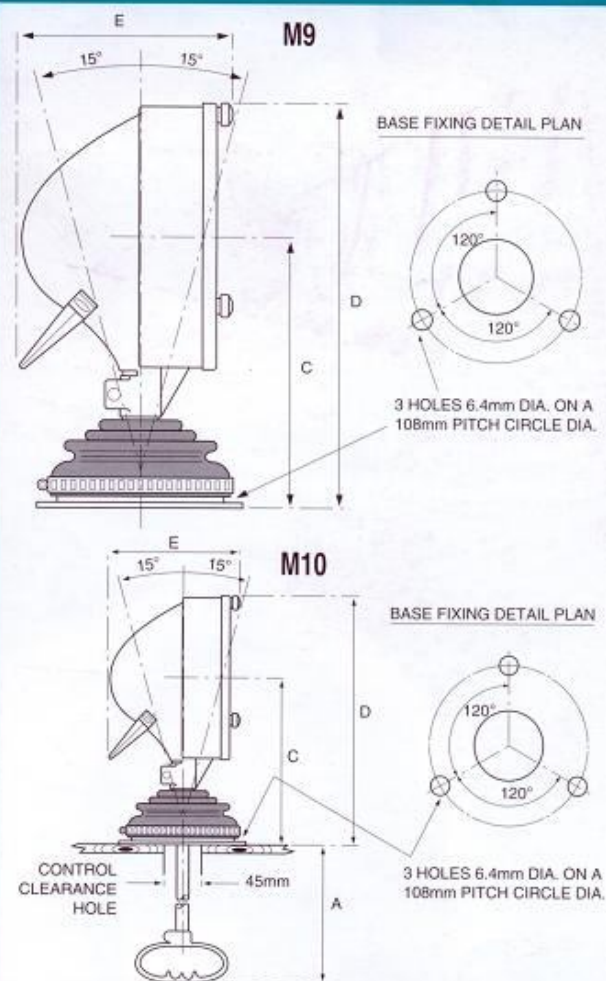
Application

These searchlights are suitable for use on specialist vehicles and smaller craft such as cabin/motor cruisers, where good durability at a reasonable cost is required. These searchlights are approved by the UK Department of Transport Marine Directorate for use on ships' lifeboats according to Chapter III of the 1983 amendments of the SOLAS regulations.

DIMENSIONS	M9	M10
A	—	165mm
B	—	—
C	190mm	190mm
D	290mm	290mm
E	140mm	140mm
Width:	184mm	184mm
Diameter:	178mm	178mm
Weight:	1.7Kgs	2.2Kgs

DESPATCH NUMBERS	M9	M10
Silver Paint	A 2059	A 2084
White Paint	A 2060	A 2085

180mm ... 180mm ... 180mm



Specifications

The following features are incorporated in both the M9 & M10 searchlights:

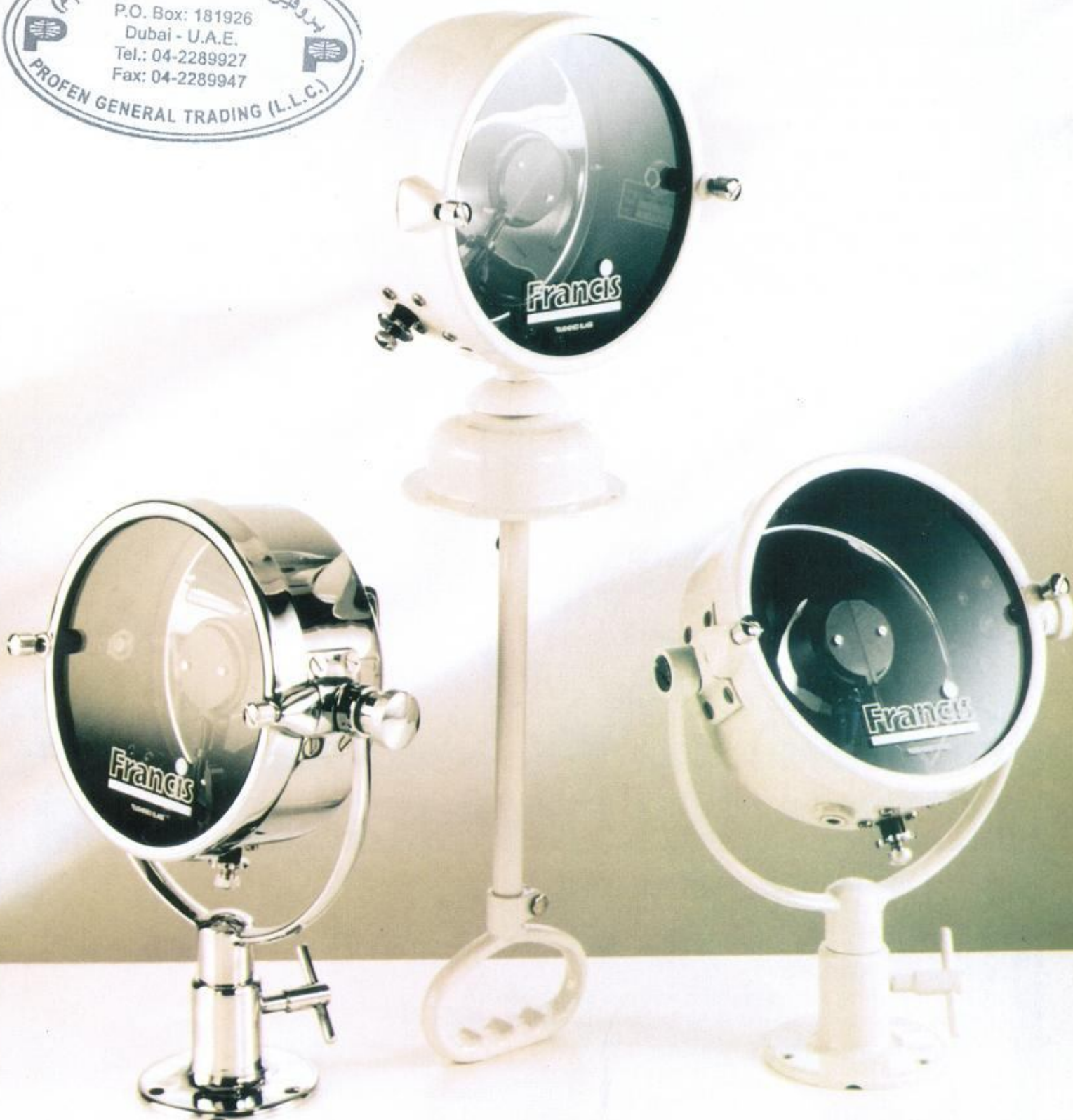
- Manufactured from sea water resistant silicon aluminium alloy.
- Polished, electro-brightened super purity aluminium parabolic reflector.
- Toughened front cover glass.
- Fixed focus.
- Stove enamelled paint finish.
- Tungsten halogen lamps.
- Electrical supply cable, standard length 1.5m

Volts	Watts	Range (Metres)	P.B.C.P.	Divergence	Lamp Cap	Lamp Ref.	Lamp Despatch N°.
12	50	357	127665	3°	G6.35	M32	D4051
12	50	357	127665	3°	G6.35	A1/220	D9879
12	100	432	187220	3°	G6.35	A1/215	D3018
12	100	432	187220	3°	G6.35	M28	D9848
24	100	412	170200	3.5°	G6.35	M67	D9850

Francis
SEARCHLIGHTS



Mk1/M12
180mm



- Solas approved.
- External focus control.
- Toughened front lens glass.
- All round horizontal rotation.
- Polished and electro-brightened aluminium reflector.

Application

These attractive, quality built searchlights are suitable for smaller craft where not only good illumination characteristics and durability is a requirement, but appearance is also important. These searchlights are approved by the U.K. Department of Transport Marine Directorate for use on ships' lifeboats according to Chapter III of the 1983 amendments of the Solas regulations.

DIMENSIONS

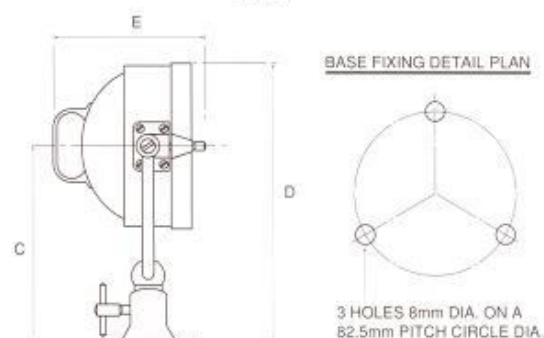
	Mk1	M12
A	—	292mm
B	—	—
C	222mm	159mm
D	313mm	255mm
E	200mm	155mm
Width:	251mm	203mm
Diameter:	178mm	178mm
Weight	3.03Kgs	2.9Kgs

DESPATCH NUMBERS

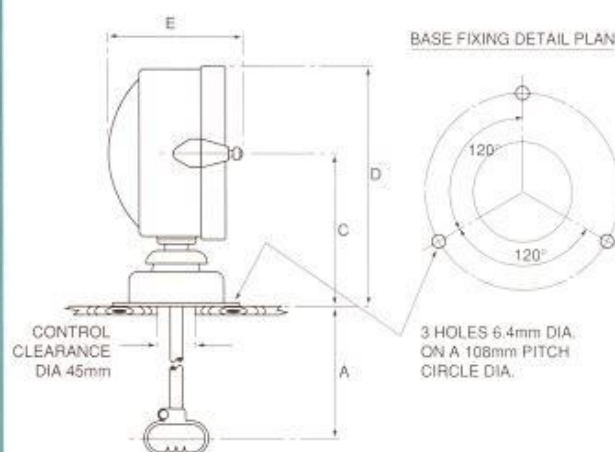
	Mk1	M12
Paint	A 2200	A 2198
Chrome	A 2201	A 2199

180mm ... 180mm ... 180mm

Mk1



M12



Specifications

The following features are incorporated in both the Mk1 & M12 searchlights:

- All brass construction.
- Toughened front lens glass.
- Tungsten halogen lamps.
- External focus adjustment.
- The Mk1 is fitted with a detachable base and is swivel mounted allowing all round horizontal movement and a vertical movement which allows the light to be pointed directly overhead.

Volts	Watts	Range (Metres)	P.B.C.P.	Divergence	Lamp Cap	Lamp Ref.	Lamp Despatch N ^o .
12	50	357	127665	3°	G6.35	M32	D4051
12	50	357	127665	3°	G6.35	A1/220	D9879
12	100	432	187220	3°	G6.35	A1/215	D3018
12	100	432	187220	3°	G6.35	M28	D9848
24	100	412	170200	3.5°	G6.35	M67	D9850