



The Brief History of Company

- 2010 · Participated in "SMM 2010 Exhibition"
· Participated in "SEAJAPAN 2010" & "VIETSHIP 2010"
- 2009 · Won "The 2009 Great Prize of Small & Medium Enterprises in Busan" and Received certificate as "A Superior Enterpriser" from Busan city
· Opened Yeosu branch office in Jeollanamdo
- 2008 · 1st place award, 2008 Korea Innovation Management by Newspeople
· Established 3rd factory
· Participated in "VIETSHIP 2008"
· Participated in "2008 South-east Asia Market Developing Association"
- 2007 · Appointed as the leading company for strategic industry from Busan city
· Accepted to supply our lighting without the inspection from Hyundai Heavy Industries.
· Be entrusted our lighting quality by our inspection from DSME
· Contracted "OFF SHORE project 6 Sets" from LABROY in Singapore working with COOPER Crouse-Hinds
· Acquired the ISO/KSA 14001 Quality System from Bureau Veritas
· Received USD 1 million export trophy" from the president and a letter of commendation from Prime Minister at the 44th Trade Day
- 2006 · Took over 3rd factory of KTE (Be 2nd Kukdong Elecom Factory)
· Achieved the Certificate of Flame-Proof Lighting for Marine from Korea Marine Equipment Research Institute
· Contracted "Sea Drill Project" from DAEWOO Shipbuilding working with COOPER Crouse-Hinds.
· Kukdong Elecom Factory advanced into Dalian, China
· Opened the branch office in Gwaebup-dong, Busan
- 2005 · Completed "1st step innovation consulting"
· Selected as the innovated company called "INNO-BIZ" by Korean Government
- 2004 · Selected as Superiority Lighting Company by Korea Illumination Research Institute(KIRI)
- 2003 · Acquired certificate for KS (Korean Standard) from Korea Standard Association (No.03-4419)
- 2002 · Acquired certificate for ISO 9001/2000 Quality from Bureau Veritas
· Received "USD 5 million export trophy" from president and a letter of commendation from Prime Minister at the 39th Trade Day
- 2001 · Became a member of ISES for the worldwide after service network
· Selected as a promoted company by Korea Technology Credit Fundamental Foundation (TECF)
· Selected as a Family Company by Korea Small and Medium Industry Bank
· The First Turnover from Shipbuilding Field at the STX Shipbuilding Company
- 2000 · Took over the lighting manufacturer Dong-Sung Electrical Co., Ltd.
· Changed the company name "Kukdong Elecom Co., Ltd."
· Contracted a project for the school and industry cooperation with Ho-seo University
· Joined as a member of KOMEA (Korea Marine Equipment Association)



Major Production Items

- Marine Lighting Fixtures
- Offshore Lighting Fixtures
- Naval Lighting Fixtures
- LED Lighting Fixtures
- Ex-proof Lighting Fixtures (with ATEX Certificate)
- Search Light for Low Temperature Operation (-45°C)
- RCS (Reefer Container Socket)
- MCT (Multi Cable Transit)
- Night Vision System
- Lighting Fixtures for Industrial Use



Organization



The List of I.S.E.S Members (45 countries)

		Electrical	Electronic Instrumentation	Communication/ Navigation	Specialised Mechanical Services	Material / Supplies / Equipment
Korea	KUKDONG ELECOM	✓				✓
	KTE	✓	✓		✓	
	SAMSUNG HEAVY INDUSTRIES	✓	✓	✓		
	SANIL ELECTRIC	✓	✓			✓
	S.H.E.	✓				
Japan	JRCS CORPORATION	✓	✓			
	BEMAC UZUSHIO ELECTRIC	✓	✓	✓		
	TERASAKI ELECTRIC	✓	✓			
Singapore	CYCLECT ELECTRICAL ENGINEERING	✓	✓	✓	✓	

Major Clients

Domestic Market

DAEWOO SHIPBUILDING & MARINE ENGINEERING
 HYUNDAI HEAVY INDUSTRIES
 SAMSUNG HEAVY INDUSTRIES
 HANJIN HEAVY INDUSTRIES
 STX OFFSHORE & SHIPBUILDING
 HYUNDAI SAMHO HEAVY INDUSTRIES
 HYUNDAI MIPO DOCKYARD
 SUNGDONG SHIPYARD
 SLS / SPP SHIPYARD

Overseas Market

JAPAN MITSUBISHI HEAVY INDUSTRIES
 USC GROUP / TSU, ARIAKE, MAIZURU S.Y
 SHINKURUSHIMA / IHI /SHINKOCHI/KYOKUYO

 CHINA SINO-PACIFIC GROUP/ DAYANG, ZHEJIANG
 JIANGNAN/ CHENGXI/ NEW TIMES/ CHANGBO
 YANGZIJANG / TSUJI S.Y / ZHEJIANG CHENYE
 SHANGHAI / COSCO ZHOUSHAN / SANFU S.Y
 JIANGXIN / FUJIAN DONGNAN S.Y
 BOHAI / COSCO DALIAN / XINGANG S.Y

 VIETNAM VINA-SHIN GROUP/ NAMTRIEU / HALONG
 BACH DANG / PHARUNG / DUNG QUAT S.Y
 BENKIEN S.Y / 189 S.Y

 TURKEY DEGUSAN / YARDIMCHI / SOLI / SEFINE / SAHIN / FILIZ

 SINGAPORE / INDIA / IRAN / MALAYSIA



Contents

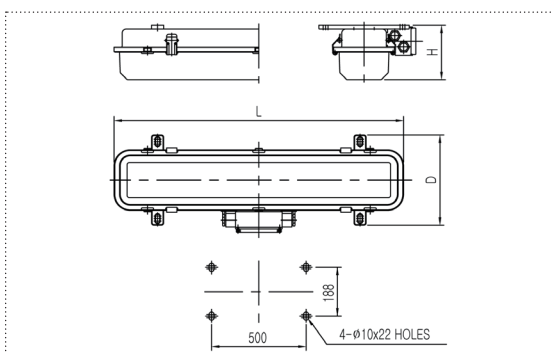
LED CEILING LIGHT, SURFACE / LES-W-U	7
LED CEILING LIGHT, CYLINDER / LEY-W	8
LED CEILING LIGHT, SURFACE / LES-N	9
LED CEILING LIGHT, FLUSH / LEF-N	10
LED CEILING LIGHT, NO-GAP / LEW-N	11
LED CEILING LIGHT, DAMPA / LEC-N	12
LED CEILING LIGHT, FLUSH / LEF-S	13
LED CEILING LIGHT, THIN SURFACE / LES-S	14
LED CORNER LIGHT / LEP-N	15
LED BERTH LIGHT / LED DESK LIGHT / LEB-SN / LED-SN	16
LED MIRROR LIGHT / LEM-S	17
LED FLOOD LIGHT / PFLE-80	18
LED FLOOD LIGHT / PFLE-130	19
LED EX-PROOF CEILING LIGHT, CYLINDER / LEXd-Y	20
LED EX-PROOF PENDANT LIGHT / LEXd-P	21
LED EX-PROOF FLOOD LIGHT / LEXd-PF	22
LED CHART TABLE LIGHT / LETS-N / LETW-N	23
LED PENDANT LIGHT / LEPH-P	24
LED PENDANT LIGHT / LEPN-B	25
LED BULKHEAD LIGHT / LEKH-P	26
LED BULKHEAD LIGHT, NEW JIS / LEKHN-P	27
LED BULKHEAD LIGHT / LEKN-B	28
LED BRACKET LIGHT / LEBH-P	29
LED BRACKET LIGHT / LEBN-B	30
LED DOME LIGHT / LEM-U	31
LED WALL LIGHT / LEW-W	32
LED CEILING LIGHT / LECF-N	33
LED DOWN LIGHT / LEDN-N	34
LED PORTABLE HAND LAMP / LEH-W	35
LED DECORATIVE WALL LIGHT / LEDE-ND	36
LED EXIT LIGHT / LEE-NF	37
LED EXIT LIGHT / LEE-SS	38
LED NAVIGATION & SIGNAL LIGHT / LEN-S	39
LED SUEZ / PANAMA CANAL SIGNAL LIGHT / LESL-C / LESL-S	40
LED DAY TIME SIGNAL LIGHT / LEDsL-A	41

LES-W-S

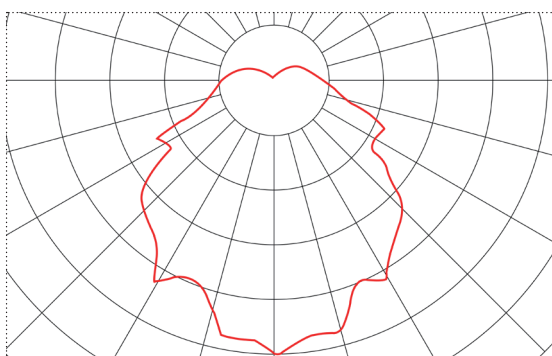
LED CEILING LIGHT, SURFACE



Technical Drawing



Light Distribution Curve



Application

Engine room, workshops, stores, holds, passage ways

Design

According to rules of maritime classification societies, additional IEC

Features

Watertight multipurpose lighting fixtures

Surface

Easy connection

Protection degree: IP56

Materials

Housing: Electrolytic galvanized iron steel sheet deep drawn

Diffuser: Clear polycarbonate

Latch: Stainless steel

Finish

Powder coated white N-9.3 and enameled up to 70~80µm thickness

Specification

Light sources: 7.2W LED module x 2 (~8)

Cable entry: 4 cable glands M24x1.5

(Max. diameter 17mm cable)

Mounting: 4 mounting holes, dia. 10mm

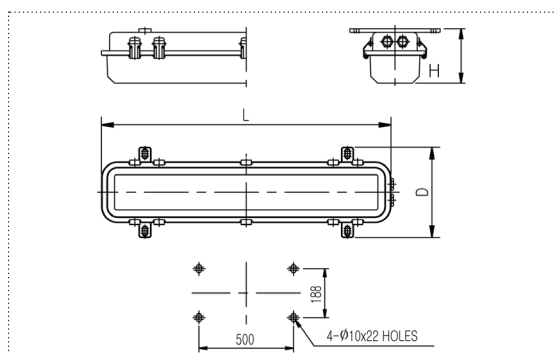
Voltage and frequency: AC100~220V, 50/60Hz

Model no. and Dimensions

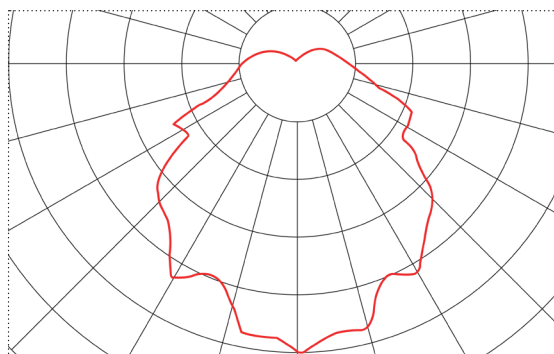
Model no.	Capacity	L	D	H	Weight (kg)	Remark
		(mm)				
LES-151W-S	15W	715	223	133	4.70	
LES-152W-S	29W	715	223	133	4.70	
LES-291W-S	29W	1350	223	133	7.03	
LES-292W-S	58W	1350	223	133	7.03	



Technical Drawing



Light Distribution Curve



Model no. and Dimensions

Model no.	Capacity	L	D	H	Weight (kg)	Remark
		(mm)				
LES-151W-U	15W	715	223	133	4.75	
LES-152W-U	29W	715	223	133	4.75	
LES-291W-U	29W	1350	223	133	6.06	
LES-292W-U	58W	1350	223	133	6.06	

Application

Engine room, workshops, stores, holds, passage ways

Design

According to rules of maritime classification societies, additional IEC

Features

Watertight multipurpose lighting fixtures
Surface
Easy connection
Protection degree: IP56

Materials

Housing: Electrolytic galvanized iron steel sheet deep drawn
Diffuser: Clear polycarbonate
Latch: Stainless steel

Finish

Powder coated white N-9.3
and enameled up to 70~80µm thickness

Specification

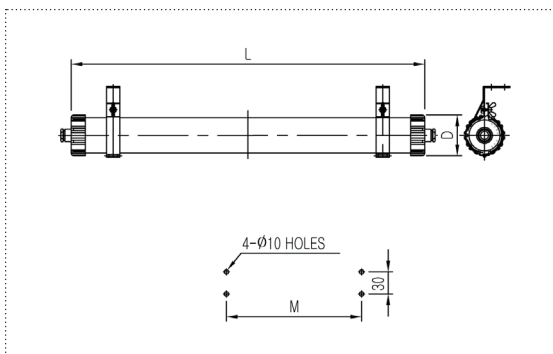
Light sources: 7.2W LED module x 2 (~8)
Cable entry: 4 cable glands M24x1.5
(Max. diameter 17mm cable)
Mounting: 4 mounting holes, dia. 10mm
Voltage and frequency: AC100~220V, 50/60Hz

LEY-W

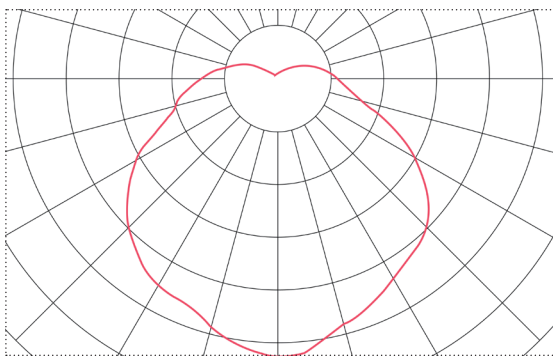
LED CEILING LIGHT, CYLINDER



Technical Drawing



Light Distribution Curve



Application

Decks

Design

According to rules of maritime classification societies, additional IEC

Features

Watertight multipurpose lighting fixtures

Surface

Protection degree: IP67

Materials

Housing: Cast aluminum

Diffuser: Clear carbonate

Finish

Powder coated white N-9.3
and enameled up to 70~80µm thickness

Specification

Light sources: 11/22W LED tube

Cable entry: 2 cable glands M24x1.5

(Max. diameter 17mm cable)

Mounting: 2 mounting holes, dia. 10mm

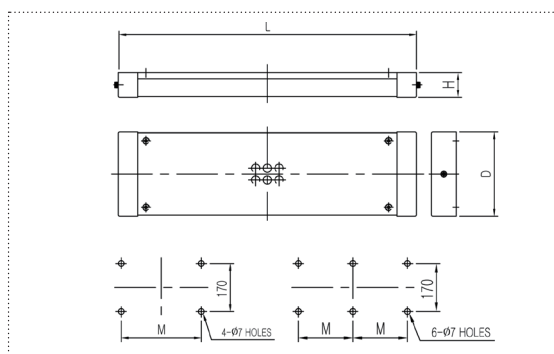
Voltage and frequency: AC100~220V, 50/60Hz

Model no. and Dimensions

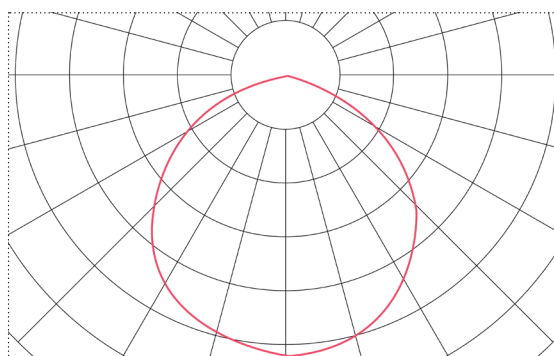
Model no.	Capacity	L	D	H	Weight (kg)	Remark
		(mm)				
LEY-111W	1 1W	1080	92	890	3.7	
LEY-221W	22W	1690	92	1500	5.0	



Technical Drawing



Light Distribution Curve



Application

Accommodation areas, passage ways

Design

According to rules of maritime classification societies, additional IEC

Features

Protection degree: IP22

Materials

Housing: Electrolytic galvanized iron steel sheet deep drawn
Diffuser: Opal acrylic, others on request

Finish

Powder coated white N-9.3
and enameled up to 70~80μm thickness

Specification

Light sources: 28.8W LED module x 1 (~2)
Cable entry: Cable inlet hole (50mm x 80mm)
Mounting: 4 mounting holes, dia. 7mm
Voltage and frequency: AC100~220V, 50/60Hz

Optional

Remote control system
Dimming control system
2 channel color selection

Model no. and Dimensions

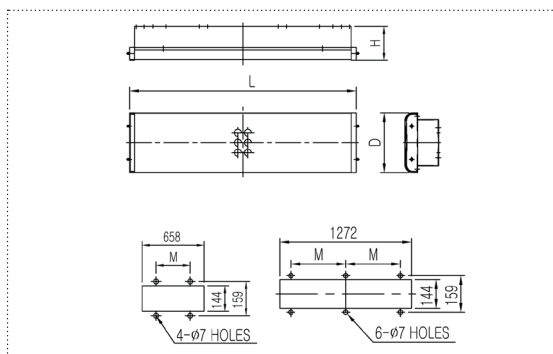
Model no.	Capacity	L	D	H	M	Weight (kg)	Remark
		(mm)					
LEW-152N	29W	762	216	63	620	3.90	
LEW-292N	58W	1250	216	63	860	7.20	

LEF-N

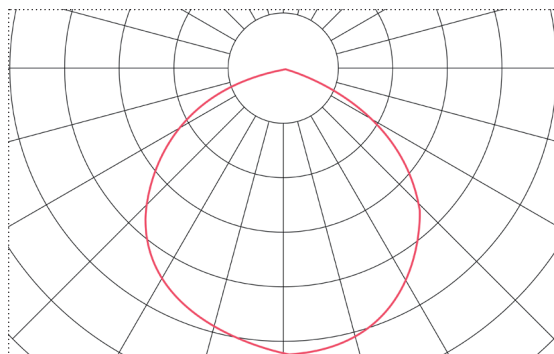
LED CEILING LIGHT, FLUSH



Technical Drawing



Light Distribution Curve



Application

Accommodation areas, passage ways

Design

According to rules of maritime classification societies, additional IEC

Features

Protection degree: IP22

Materials

Housing: Electrolytic galvanized iron steel sheet deep drawn

Diffuser: Opal acrylic, others on request

Finish

Powder coated white N-9.3
and enameled up to 70~80µm thickness

Specification

Light sources: 28.8W LED module x 1 (~2)

Cable entry: 6 snap bushing

(Max. diameter 18mm cable)

Mounting: Recessed in ceiling

Voltage and frequency: AC100~220V, 50/60Hz

Optional

Remote control system

Dimming control system

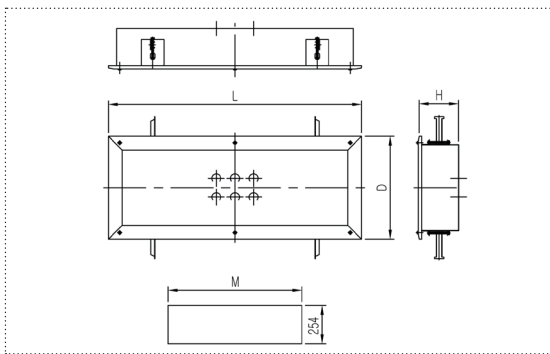
2 channel color selection

Model no. and Dimensions

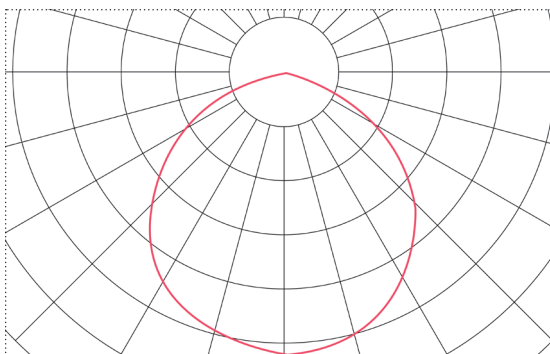
Model no.	Capacity	L	D	H	M	Weight (kg)	Remark
		(mm)					
LEF-152N	29W	684	181	102	480	4.21	
LEF-292N	58W	1294	181	102	547	7.23	



Technical Drawing



Light Distribution Curve



Model no. and Dimensions

Model no.	Capacity	L	D	H	M	Weight (kg)	Remark
		(mm)					
LEW-152N	29W	677	275	110.8	636	7.6	
LEW-292N	58W	1270	275	110.8	1246	12.7	

Application

Accommodation areas, passage ways

Design

According to rules of maritime classification societies, additional IEC

Features

Installed flush with the surface in no gap continuously ceiling systems

Protection degree: IP22

Materials

Housing: Electrolytic galvanized iron steel sheet deep drawn

Diffuser: Opal acrylic, others on request

Finish

Powder coated white N-9.3 and enameled up to 70~80μm thickness

Specification

Light sources: 28.8W LED module x 1 (~2)

Cable entry: 6 snap bushing (Max. diameter 18mm cable)

Mounting: Recessed in no gap ceiling

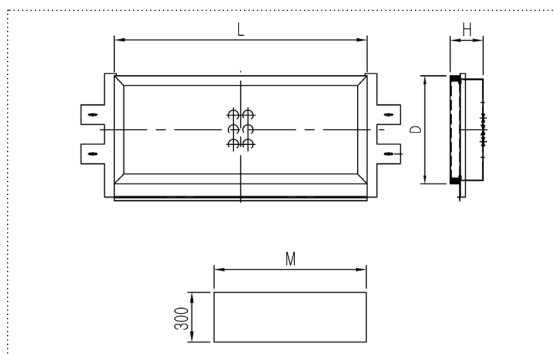
Voltage and frequency: AC100~220V, 50/60Hz

LEC-N

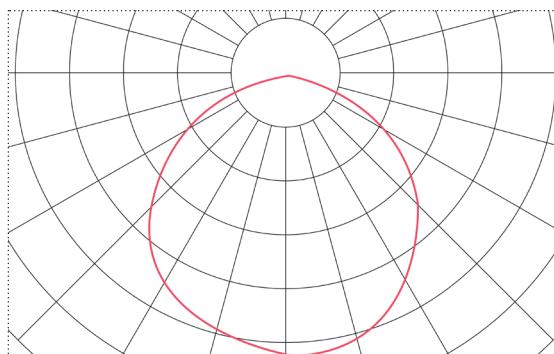
LED CEILING LIGHT, DAMPA



Technical Drawing



Light Distribution Curve



Application

Accommodation areas, passage ways

Design

According to rules of maritime classification societies, additional IEC

Features

Installed flush with the surface in gap continuously ceiling systems
Protection degree: IP22

Materials

Housing: Electrolytic galvanized iron steel sheet deep drawn
Diffuser: Opal acrylic, others on request

Finish

Powder coated white N-9.3
and enameled up to 70~80µm thickness

Specification

Light sources: 14.4W LED module x 2 (~4)
Cable entry: 6 snap bushing
(Max. diameter 18mm cable)
Mounting: Recessed in gap ceiling
Voltage and frequency: AC100~220V, 50/60Hz

Optional

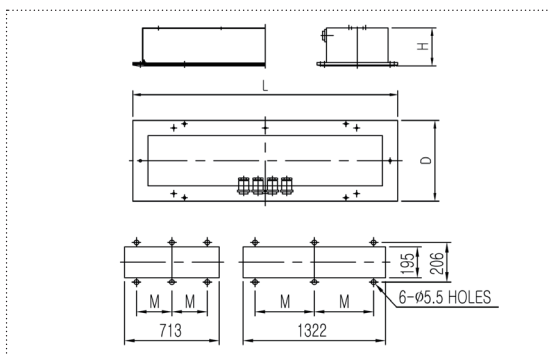
Remote control system
Dimming control system
2 channel color selection

Model no. and Dimensions

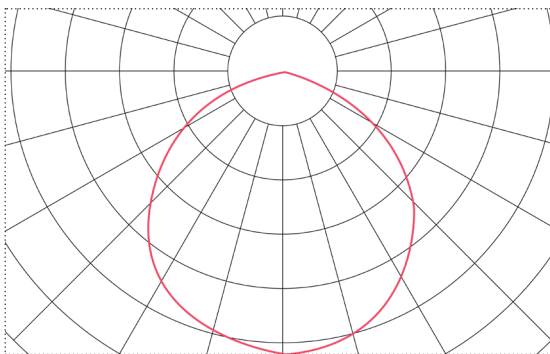
Model no.	Capacity	L	D	H	M	Weight (kg)	Remark
		(mm)					
LEC-152N	29W	645	275	84.2	647	5.75	
LEC-292N	58W	1270	275	84.2	1272	8.80	



Technical Drawing



Light Distribution Curve



Model no. and Dimensions

Model no.	Capacity	L	D	H	M	Weight (kg)	Remark
		(mm)					
LEF-152S	29W	739	225	105.5		4.95	
LEF-292S	58W	1349	225	105.5	560	8.73	

Application

Galley, laundry, pantry and scullery

Design

According to rules of maritime classification societies, additional IEC

Features

Protection degree: IP44

Materials

Housing: Electrolytic galvanized iron steel sheet deep drawn
Diffuser: Opal acrylic, others on request

Finish

Powder coated white N-9.3
and enameled up to 70~80µm thickness

Specification

Light sources: 28.8W LED module x 1 (~2)
Cable entry: 4 cable glands PG16 (Max. diameter 14mm cable)
Mounting: Recessed in ceiling
Voltage and frequency: AC100~220V, 50/60Hz

Optional

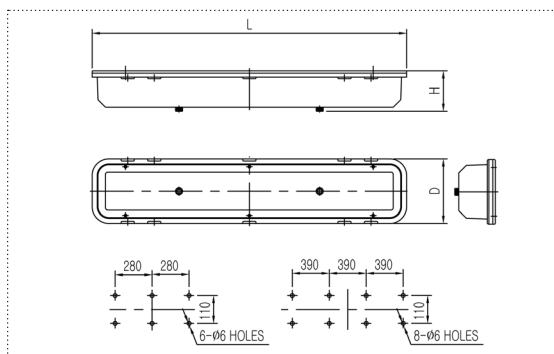
Remote control system
Dimming control system
2 channel color selection

LES-S

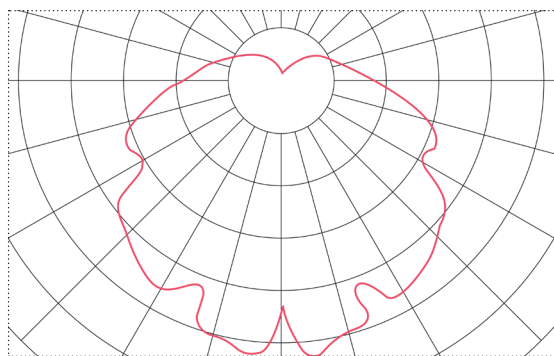
LED CEILING LIGHT, THIN SURFACE



Technical Drawing



Light Distribution Curve



Application

Galley, laundry, pantry and scullery

Design

According to rules of maritime classification societies, additional IEC

Features

Watertight multipurpose lighting fixtures

Surface

Easy connection

Protection degree: IP44

Materials

Housing: Electrolytic galvanized iron steel sheet deep drawn

Diffuser: Clear polycarbonate

Finish

Powder coated white N-9.3 and enameled up to 70~80µm thickness

Specification

Light sources: 7.2W LED Module x 2 (~8)

Cable entry: 4 cable inlet holes

(Max. diameter 17mm cable)

Mounting: 6~8 mounting holes, dia. 6mm

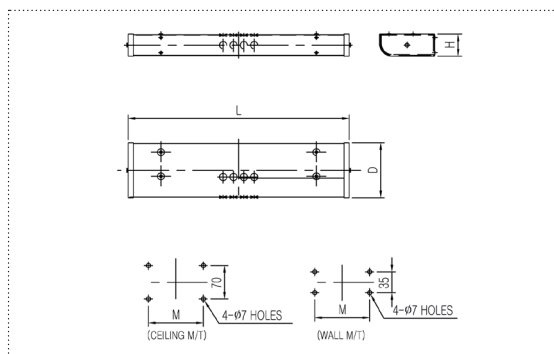
Voltage and frequency: AC100~220V, 50/60Hz

Model no. and Dimensions

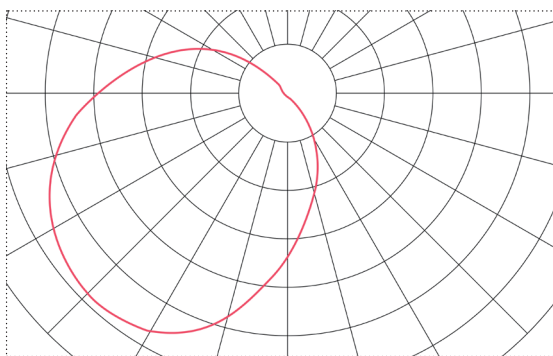
Model no.	Capacity	L	D	H	Weight (kg)	Remark
		(mm)				
LES-151S	15W	711	146	82.4	4.22	
LES-152S	29W	711	146	82.4	4.22	
LES-291S	29W	1321	146	82.4	6.98	
LES-292S	58W	1321	146	82.4	6.98	



Technical Drawing



Light Distribution Curve



Model no. and Dimensions

Model no.	Capacity	L	D	H	M	Weight (kg)	Remark
		(mm)					
LEP-151N	15W	640	160	65	450	3.77	
LEP-291N	29W	1250	160	65	860	5.25	

Application

Accommodation areas, passage ways

Design

According to rules of maritime classification societies, additional IEC

Features

Protection degree: IP22

Materials

Housing: Electrolytic galvanized iron steel sheet deep drawn

Diffuser: Opal acrylic, others on request

Finish

Powder coated white N-9.3
and enameled up to 70~80μm thickness

Specification

Light sources: 7.2W LED module x 2 (~4)

Cable entry:

- Ceiling: cable inlet hole, dia. 50mm

- Wall: 4 snap bushing (Max, diameter 18mm cable)

Mounting: 4 mounting holes, dia. 7mm

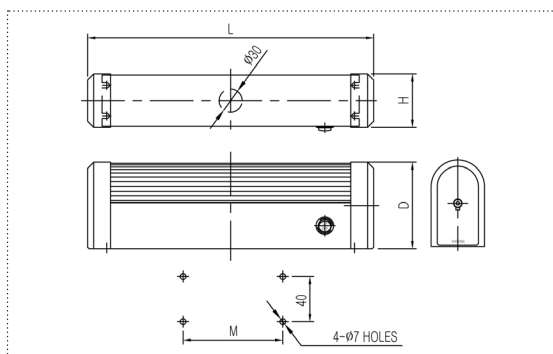
Voltage and frequency: AC100~220V, 50/60Hz

LEB-SN / LED-SN

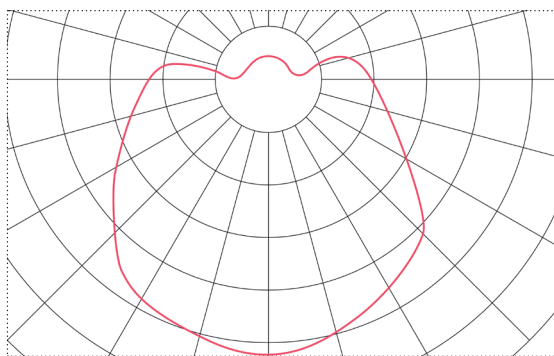
LED BERTH LIGHT / LED DESK LIGHT



Technical Drawing



Light Distribution Curve



Application

Accommodation areas, berth, desk

Design

According to rules of maritime classification societies, additional IEC

Features

Protection degree: IP22
With on/off switch

Materials

Housing: Aluminum
End cover: Polycarbonate
Diffuser: Polycarbonate

Finish

Powder coated white N-9.3
and enameled up to 70~80µm thickness

Specification

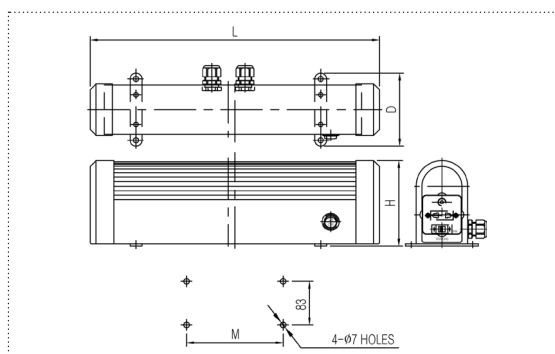
Light sources: 6/8/12/14W LED module
Cable entry: Cable inlet hole, dia. 30mm
Mounting: 4 mounting holes, dia. 7mm
Voltage and frequency: AC100~220V, 50/60Hz

Model no. and Dimensions

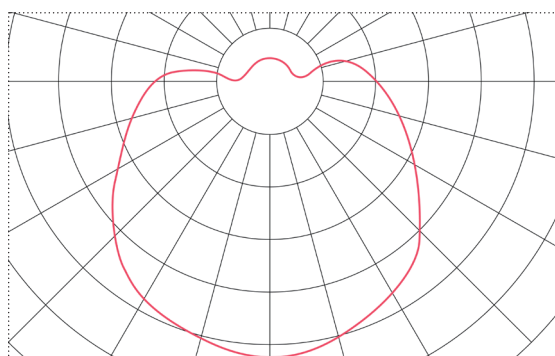
Model no.	Capacity	L	D	H	M	Weight (kg)	Remark
		(mm)					
LEB-06SN	6W	375	70	113	325	1.3	
LEB-08SN	8W	417	70	113	367	1.5	
LEB-12SN	12W	524	70	113	474	1.8	
LEB-14SN	14W	677	70	113	627	2.0	
LED-06SN	6W	375	70	113	325	1.3	
LED-08SN	8W	417	70	113	367	1.5	
LED-12SN	12W	524	70	113	474	1.8	
LED-14SN	14W	677	70	113	627	2.0	



Technical Drawing



Light Distribution Curve



Application

Accommodation areas, shower rooms, wash rooms, toilets

Design

According to rules of maritime classification societies, additional IEC

Features

Protection degree: IP44

With on/off switch

Materials

Housing: Aluminum

End cover: Polycarbonate

Diffuser: Polycarbonate

Finish

Powder coated white N-9.3
and enameled up to 70~80µm thickness

Specification

Light sources: 6/8/12/14W LED module

Cable entry: 2 cable glands PG16

Mounting: 4 mounting holes, dia. 7mm

Voltage and frequency: AC100~220V, 50/60Hz

Model no. and Dimensions

Model no.	Capacity	L	D	H	Weight (kg)	Remark
		(mm)				
LEM-06SS	6W	392	70	113	1.3	
LEM-08SS	8W	434.5	70	113	1.5	
LEM-12IS	12W	542	70	113	2.3	W/ISO.TR & Univer.socket
LEM-14IS	14W	695	70	113	2.5	W/ISO.TR & Univer.socket

PFLE-80

LED FLOOD LIGHT



Application

Decks, holds and working areas
Chemical processing and industrial

Design

According to rules of maritime classification societies,
additional IEC

Features

Flood light (Narrow type)
Fixed type
Exterior connection box
Protection degree: IP67

Materials

Housing: Stainless steel sheet deep drawn, seamless
Front glass: Tempered glass

Finish

Powder coated white N-9.3
and enameled up to 70~80µm thickness

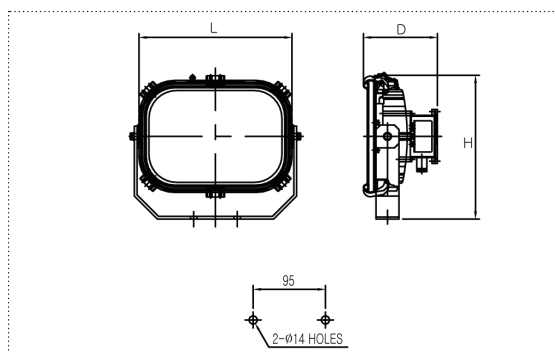
Specification

Light sources: 80W LED module
Voltage and frequency: AC100~220V, 50/60Hz

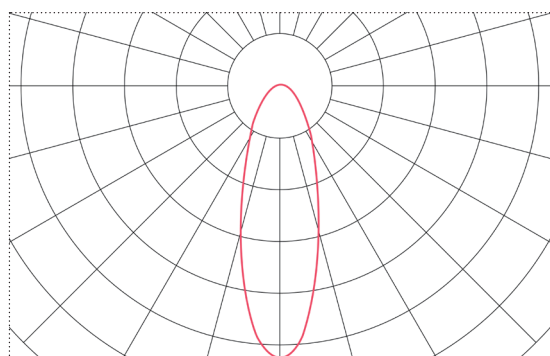
Optional

Wide beam

Technical Drawing



Light Distribution Curve



Model no. and Dimensions

Model no.	Capacity	L	D	H	Weight (kg)	Remark
		(mm)				
PFIF-80	80W	375	112	312	3.2	



Application

Decks, holds and working areas
Chemical processing and industrial

Design

According to rules of maritime classification societies,
additional IEC

Features

Flood light (Narrow type)
Fixed type
Exterior connection box
Protection degree: IP67

Materials

Housing: Stainless steel sheet deep drawn, seamless
Front glass: Tempered glass

Finish

Powder coated white N-9.3
and enameled up to 70~80µm thickness

Specification

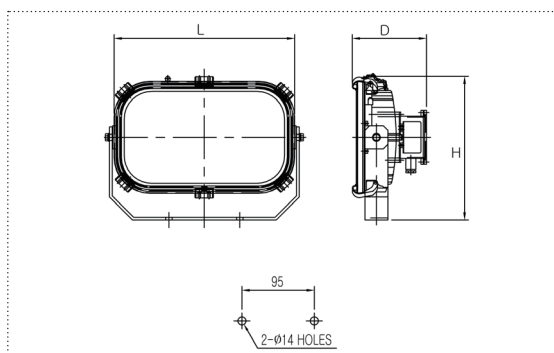
Light sources: 80W LED module
Voltage and frequency: AC100~220V, 50/60Hz

Optional

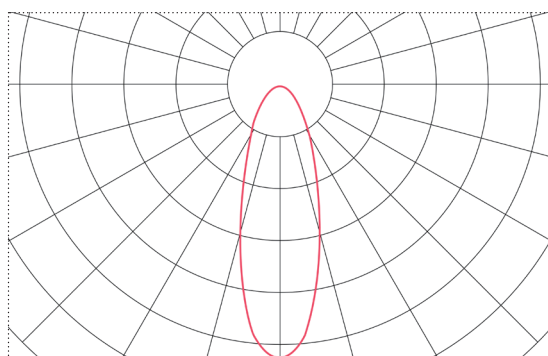
Wide beam



Technical Drawing



Light Distribution Curve

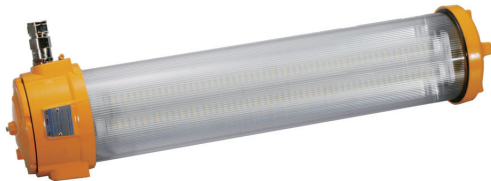


Model no. and Dimensions

Model no.	Capacity	L	D	H	Weight (kg)	Remark
		(mm)				
PFL E-130	130W	485	112	308	5.0	

LEXd-Y

LED EX-PROOF CEILING LIGHT, CYLINDER



Application

Hazardous areas, Zone 1 and Zone 2
Ex "d" flameproof enclosure

Design

According to rules of the standard IEC79-0, 79-1, 529

Features

Protection degree: Ex-de IIC T6, IP66
Easy maintenance and wire connection via terminal cover cap

Materials

Housing: Cast aluminum alloy (AC7A)
Globe: Clear polycarbonate

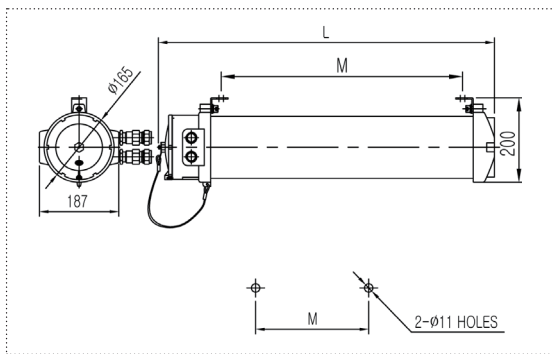
Finish

Powder coated yellow 10YR7/14 G40
and enameled up to 70~80µm thickness

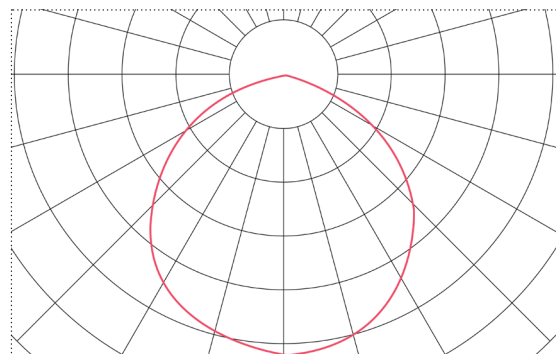
Specification

Light sources: 7.2W LED module x 4 (~8)
Cable entry: 2 or 4 cable glands NPT 3/4"
(Max. diameter 18mm cable)
Mounting: 2 mounting holes, dia. 11mm
Voltage and frequency: AC100~220V, 50/60Hz

Technical Drawing



Light Distribution Curve



Model no. and Dimensions

Model no.	Capacity	L	D	H	M	Weight (kg)	Remark
		(mm)					
LEXd-Y152	29W	786	180	210	565	7.9	
LEXd-Y292	58W	1396	180	210	1180	10.6	



Application

Hazardous areas, Zone 1 and Zone 2
Ex "d" flameproof enclosure

Design

According to rules of the standard IEC79-0, 79-1, 529

Features

Protection degree: Ex-de IIC T5, T6, IP66
Flame retardant threaded joints (no external seal required)
Easy assembly and lamp change
Exterior connection box

Materials

Housing: Cast aluminum alloy (AC7A)
Globe: Clear tempered glass
Guard: Stainless steel

Finish

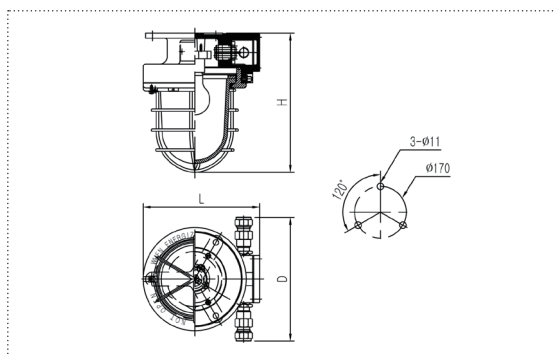
Powder coated yellow 10YR7/14 G40
and enameled up to 70~80µm thickness

Specification

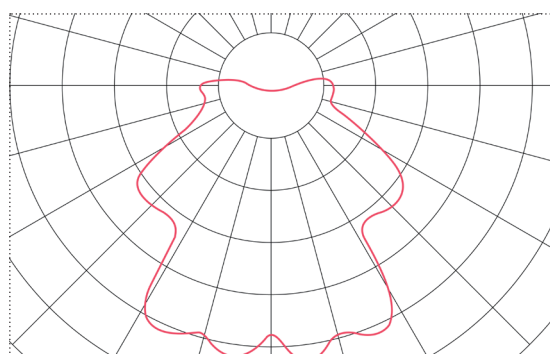
Light sources: 5/8W LED bulb
Cable entry: 1 and 2 cable glands NPT 3/4"
(Max. diameter 18mm cable)
Mounting: 3 mounting holes, P.C.D 17mm, dia. 11mm
Voltage and frequency: AC100~220V, 50/60Hz



Technical Drawing



Light Distribution Curve



Model no. and Dimensions

Model no.	Capacity	L	D	H	Weight (kg)	Remark
		(mm)				
LEXd-P05	5W	235	250	280	6.1	
LEXd-P08	8W	235	250	280	6.1	

LEXd-PF

LED EX-PROOF FLOOD LIGHT



Application

Hazardous areas, Zone 1 and Zone 2
Ex "d" flameproof enclosure

Design

According to rules of the standard IEC79-0, 79-1, 529

Features

Protection degree: Ex-d IIC T5, IP67
Seismic performance: A1-B1 0.5 level 1.5H
Flame retardant threaded joints (no external seal required)
Easy assembly and lamp change
Exterior connection box
Operating temperature: -30°C~80°C

Materials

Housing: Cast aluminum alloy (AC7A)
Globe: Clear tempered glass

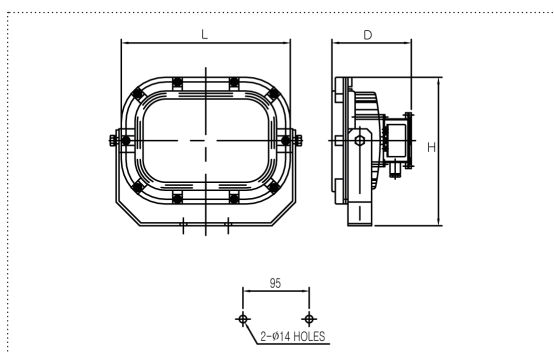
Finish

Powder coated yellow 10YR7/14 G40
and enameled up to 70~80µm thickness

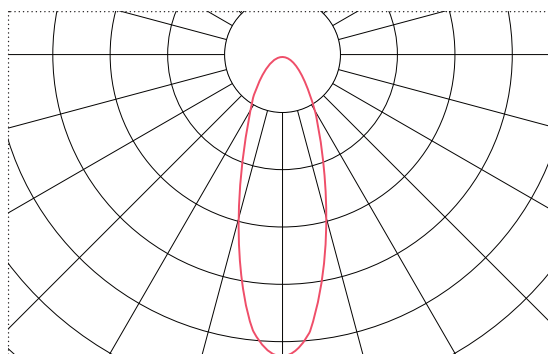
Specification

Light sources: 80W LED module
Voltage and frequency: AC100~220V, 50/60Hz

Technical Drawing



Light Distribution Curve



Model no. and Dimensions

Model no.	Capacity	L	D	H	Weight (kg)	Remark
		(mm)				
LEXd-PF80	80W	405	175	312	5.5	



Application

Wheelhouse

Design

According to rules of maritime classification societies

Features

W/Dimmer switch
Wall mounted, stand type
Protection degree: IP20

Materials

Housing: Aluminum sheet spinning, seamless
Arm: Steel rectangle pipe
Terminal block box: Cast aluminum

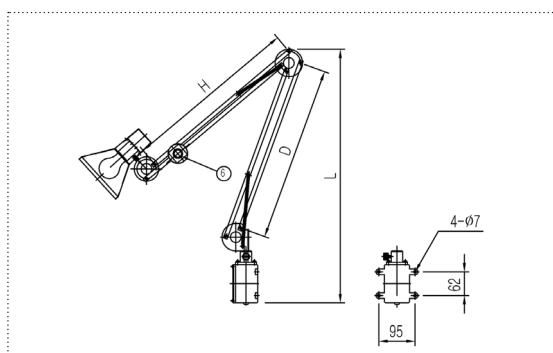
Finish

Powder coated black N-9.3
and enameled up to 70~80μm thickness

Specification

Light sources: 5/8W LED bulb
Lamp base: E27
Cable entry: 1 cable inlet hole
(Max. diameter 20mm cable)
Mounting: 4 mounting holes, dia. 7mm
Voltage and frequency: AC100~220V, 50/60Hz

Technical Drawing



Model no. and Dimensions

Model no.	Capacity	L	D	H	Weight (kg)	Remark
		(mm)				
LETS-05N	5W	635	460	460	1.5	Stand type
LETS-08N	8W	635	460	460	1.5	Stand type
LETW-05N	5W	670	460	465	1.5	Wall mount
LETW-08N	8W	670	460	465	1.5	Wall mount

LEPH-P

LED PENDANT LIGHT



Application

Engine room, workshops, stores, holds, passage ways

Design

According to rules of maritime classification societies, additional JIS

Features

Watertight multipurpose lighting fixtures
Surface
The body structure is hinged on the cable connection and maintenance is very easy.
Protection degree: IP56

Materials

Housing: PBT (Poly Butylene Terephthalate)
Globe: Hard glass (Clear) (S90)
Guard: Polycarbonate

Finish

Body: Blue green (Munsell N7.5BG7/2)
Guard: Clear

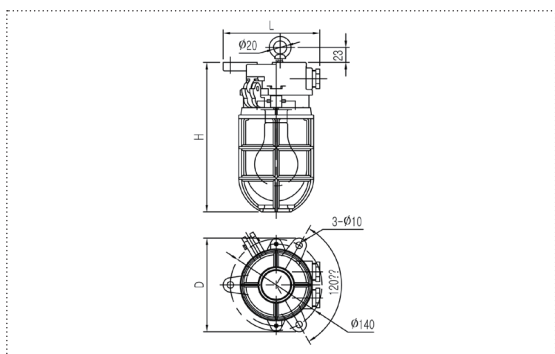
Specification

Light sources: 2/5/8W LED bulb
Lamp base: E27
Cable entry: 2 cable glands M24x1.5
(Max. diameter 17mm cable)
Mounting: 3 mounting holes, dia. 10mm
Voltage and frequency: AC100~220V, 50/60Hz

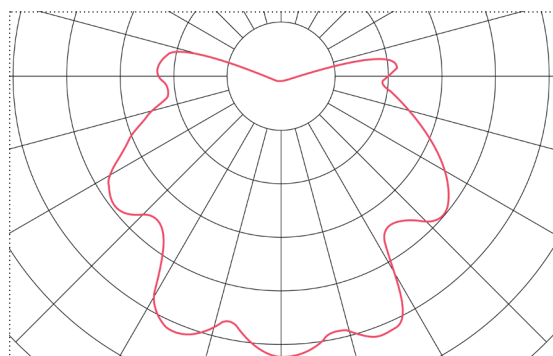
Optional

Guard: Cast brass Screen: Stainless steel Hanging hook

Technical Drawing



Light Distribution Curve



Model no. and Dimensions

Model no.	Capacity	L	D	H	Weight (kg)	Remark
		(mm)				
LEPH-02WG-P	2W	114	144	228	0.96	Guard
LEPH-05WG-P	5W	114	144	228	0.96	Guard
LEPH-08WG-P	8W	114	144	228	0.96	Guard
LEPH-02WU-P	2W	114	144	228	0.96	Guard&Screen
LEPH-05WU-P	5W	114	144	228	0.96	Guard&Screen
LEPH-08WU-P	8W	114	144	228	0.96	Guard&Screen
LEPH-02WH-P	2W	114	144	228	0.96	Hanging Hook
LEPH-05WH-P	5W	114	144	228	0.96	Hanging Hook
LEPH-08WH-P	8W	114	144	228	0.96	Hanging Hook



Application

Engine room, workshops, stores, holds, passage ways

Design

According to rules of maritime classification societies, additional JIS

Features

Watertight multipurpose lighting fixtures

Surface

Protection degree: IP56

Materials

Housing: Cast brass

Globe: Hard glass (Clear) (S90)

Guard: Cast brass

Finish

Body: Natural

Guard: Natural

Specification

Light sources: 2/5/8W LED bulb

Lamp base: E27

Cable entry: 2 cable glands M24x1.5

(Max. diameter 17mm cable)

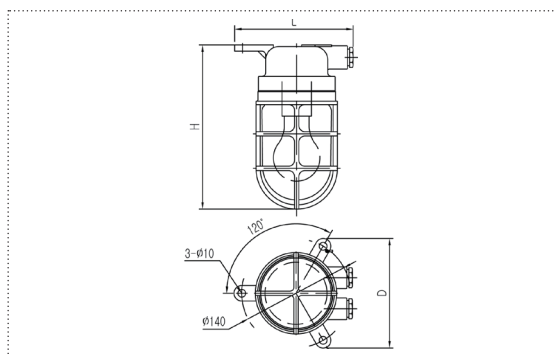
Mounting: 3 mounting holes, dia. 10mm

Voltage and frequency: AC100~220V, 50/60Hz

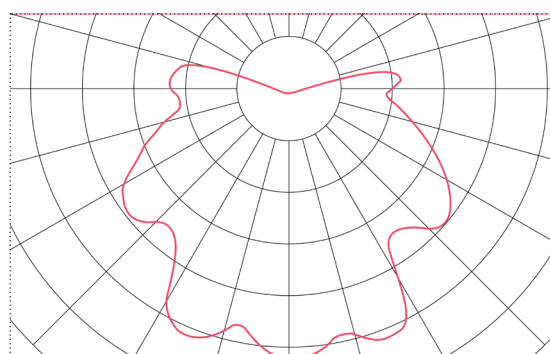
Optional

Screen: Stainless steel

Technical Drawing



Light Distribution Curve



Model no. and Dimensions

Model no.	Capacity	L	D (mm)	H	Weight (kg)	Remark
LEPN-02WG-B	2W	155	142	212	2.4	Guard
LEPN-05WG-B	5W	155	142	212	2.4	Guard
LEPN-08WG-B	8W	155	142	212	2.4	Guard
LEPN-02WU-B	2W	155	142	212	2.4	Guard&Screen
LEPN-05WU-B	5W	155	142	212	2.4	Guard&Screen
LEPN-08WU-B	8W	155	142	212	2.4	Guard&Screen

LEKH-P

LED BULKHEAD LIGHT



Application

Engine room, workshops, stores, holds, passage ways

Design

According to rules of maritime classification societies, additional JIS

Features

Watertight multipurpose lighting fixtures
Surface
The body structure is hinged on the cable connection and maintenance is very easy.
Protection degree: IP56

Materials

Housing: PBT (Poly Butylene Terephthalate)
Globe: Hard glass (Clear) (S90)
Guard: Cast brass

Finish

Body: Blue green (Munsell N7.5BG7/2)
Guard: Clear

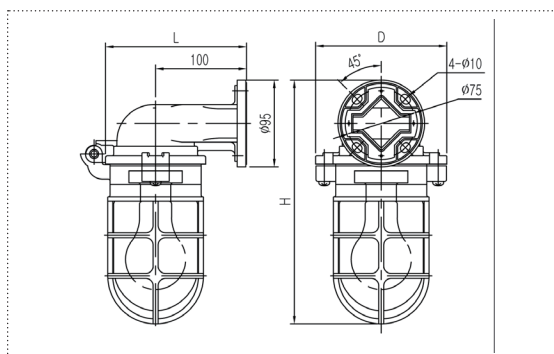
Specification

Light sources: 2/5/8W LED bulb
Lamp base: E27
Cable entry: Bulkhead to directly connected with the flange
Mounting: 4 mounting holes, dia. 10mm
Voltage and frequency: AC100~220V, 50/60Hz

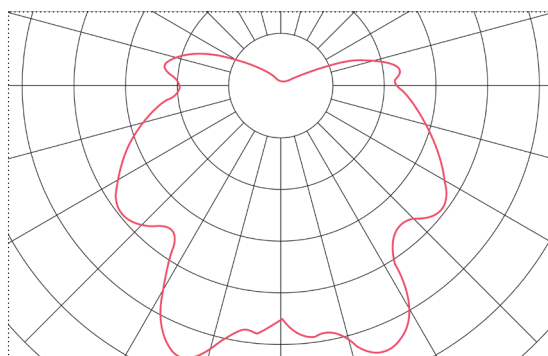
Optional

Screen: Stainless steel
Flange seat

Technical Drawing



Light Distribution Curve



Model no. and Dimensions

Model no.	Capacity	L	D	H	Weight (kg)	Remark
		(mm)				
LEKH-02WG-P	2W	155	144	267	1.24	Guard
LEKH-05WG-P	5W	155	144	267	1.24	Guard
LEKH-08WG-P	8W	155	144	267	1.24	Guard
LEKH-02WU-P	2W	155	144	267	1.24	Guard&Screen
LEKH-05WU-P	5W	155	144	267	1.24	Guard&Screen
LEKH-08WU-P	8W	155	144	267	1.24	Guard&Screen

LEKHN-P

LED BULKHEAD LIGHT, NEW JIS



Application

Engine room, workshops, stores, holds, passage ways

Design

According to rules of maritime classification societies, additional NEW JIS

Features

Watertight multipurpose lighting fixtures

Surface

The body structure is hinged on the cable connection and maintenance is very easy.

Protection degree: IP56

Materials

Housing: PBT (Poly Butylene Terephthalate)

Globe: Hard glass (Clear) (S90)

Guard: Polycarbonate

Finish

Body: Blue green (Munsell N7.5BG7/2)

Guard: Clear

Specification

Light sources: 2/5/8W LED bulb

Lamp base: E27

Cable entry: Bulkhead to directly connected with the flange

Mounting: 3 mounting holes, dia. 10mm

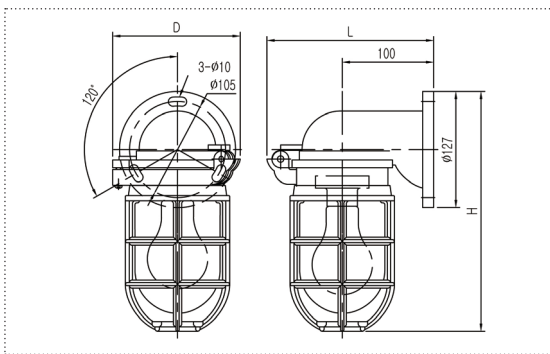
Voltage and frequency: AC100~220V, 50/60Hz

Optional

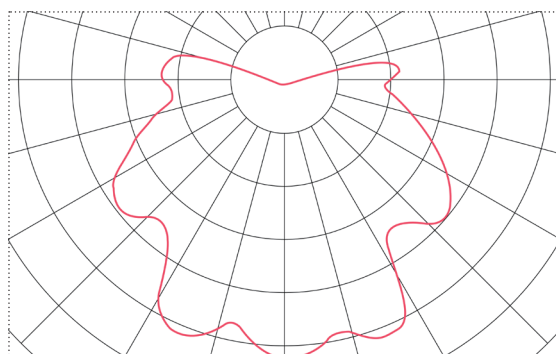
Flange seat



Technical Drawing



Light Distribution Curve



Model no. and Dimensions

Model no.	Capacity	L	D	H	Weight (kg)	Remark
		(mm)				
LEKHN-02WG-P	2W	155	144	262	1.24	Guard
LEKHN-05WG-P	5W	155	144	262	1.24	Guard
LEKHN-08WG-P	8W	155	144	262	1.24	Guard
LEKHN-02WU-P	2W	155	144	262	1.24	Guard&Screen
LEKHN-05WU-P	5W	155	144	262	1.24	Guard&Screen
LEKHN-08WU-P	8W	155	144	262	1.24	Guard&Screen

LEKN-B

LED BULKHEAD LIGHT



Application

Engine room, workshops, stores, holds, passage ways

Design

According to rules of maritime classification societies, additional JIS

Features

Watertight multipurpose lighting fixtures

Surface

Protection degree: IP56

Materials

Housing: Cast brass

Globe: Hard glass (Clear) (S90)

Guard: Cast brass

Finish

Body: Natural

Guard: Natural

Specification

Light sources: 2/5/8W LED bulb

Lamp base: E27

Cable entry: Bulkhead to directly connected with the flange

Mounting: 4 mounting holes, dia. 10mm

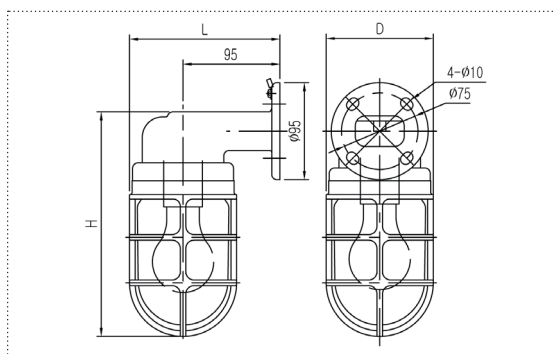
Voltage and frequency: AC100~220V, 50/60Hz

Optional

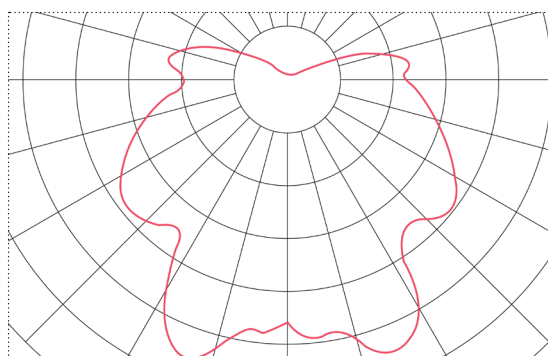
Screen: Stainless steel

Flange seat

Technical Drawing



Light Distribution Curve



Model no. and Dimensions

Model no.	Capacity	L	D	H	Weight (kg)	Remark
LEKN-02WG-B	2W	153	105	233	1.66	Guard
LEKN-05WG-B	5W	153	105	233	1.66	Guard
LEKN-08WG-B	8W	153	105	233	1.66	Guard
LEKN-02WU-B	2W	153	105	233	1.66	Guard&Screen
LEKN-05WU-B	5W	153	105	233	1.66	Guard&Screen
LEKN-08WU-B	8W	153	105	233	1.66	Guard&Screen



Application

Engine room, workshops, stores, holds, passage ways

Design

According to rules of maritime classification societies, additional IEC

Features

Watertight multipurpose lighting fixtures

Surface

The body structure is hinged on the cable connection and maintenance is very easy.

Protection degree: IP56

Materials

Housing: Polycarbonate

Globe: Hard glass (Clear) (S90)

Guard: Polycarbonate

Finish

Body: Blue green (Munsell N7.5BG7/2)

Guard: Clear

Specification

Light sources: 2/5/8W LED bulb

Lamp base: E27

Cable entry: 2 cable glands M24x1.5

(Max. diameter 17mm cable)

Mounting: 4 mounting holes, dia. 10mm

Voltage and frequency: AC100~220V, 50/60Hz

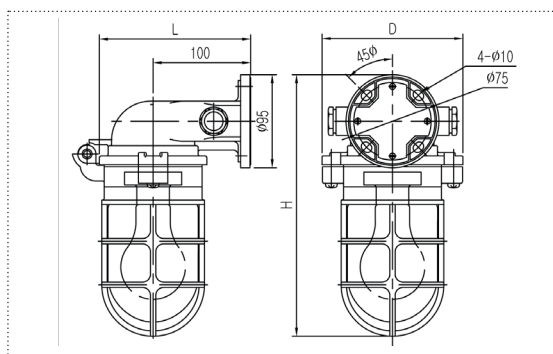
Optional

Guard: Cast brass

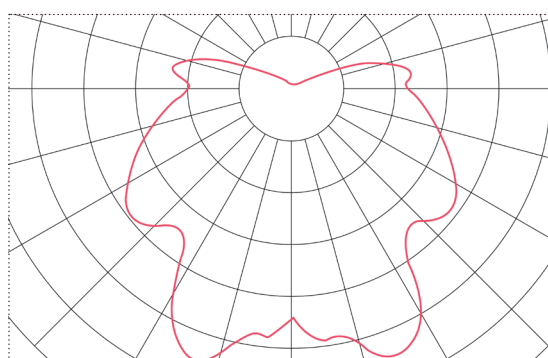
Screen: Stainless steel



Technical Drawing



Light Distribution Curve



Model no. and Dimensions

Model no.	Capacity	L	D	H	Weight (kg)	Remark
		(mm)				
LEBH-02WG-P	2W	155	144	267	1.24	Guard
LEBH-05WG-P	5W	155	144	267	1.24	Guard
LEBH-08WG-P	8W	155	144	267	1.24	Guard
LEBH-02WU-P	2W	155	144	267	1.24	Guard&Screen
LEBH-05WU-P	5W	155	144	267	1.24	Guard&Screen
LEBH-08WU-P	8W	155	144	267	1.24	Guard&Screen

LEBN-B

LED BRACKET LIGHT



Application

Engine room, workshops, stores, holds, passage ways

Design

According to rules of maritime classification societies, additional JIS

Features

Watertight multipurpose lighting fixtures

Surface

Protection degree: IP56

Materials

Housing: Cast brass

Globe: Hard glass (Clear) (S90)

Guard: Cast brass

Finish

Body: Natural

Guard: Natural

Specification

Light sources: 2/5/8W LED bulb

Lamp base: E27

Cable entry: 2 cable glands M24x1.5

(Max. diameter 17mm cable)

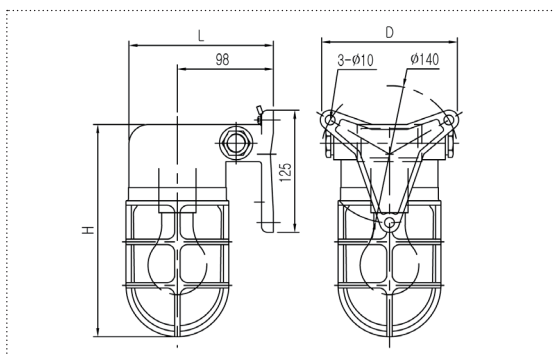
Mounting: 3 mounting holes, dia. 10mm

Voltage and frequency: AC100~220V, 50/60Hz

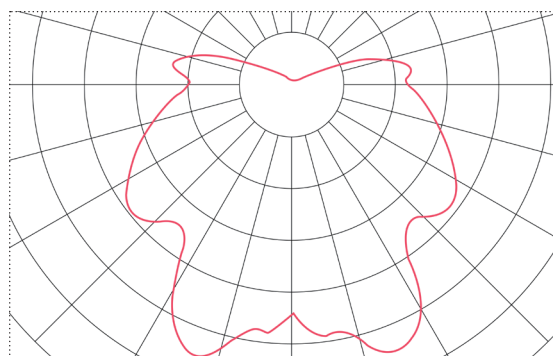
Optional

Screen: Stainless steel

Technical Drawing



Light Distribution Curve



Model no. and Dimensions

Model no.	Capacity	L	D	H	Weight (kg)	Remark
		(mm)				
LEBN-02WG-B	2W	151	142	220	1.66	Guard
LEBN-05WG-B	5W	151	142	220	1.66	Guard
LEBN-08WG-B	8W	151	142	220	1.66	Guard
LEBN-02WU-B	2W	151	142	220	1.66	Guard&Screen
LEBN-05WU-B	5W	151	142	220	1.66	Guard&Screen
LEBN-08WU-B	8W	151	142	220	1.66	Guard&Screen



Application

Refrigerated holds, workshops

Design

According to rules of maritime classification societies, additional IEC

Features

Watertight multipurpose lighting fixtures
Surface
Protection degree: IP56

Materials

Housing: Zinc coated steel sheet spinning, seamless
Globe: Hard glass (Clear)
Guard: Stainless steel

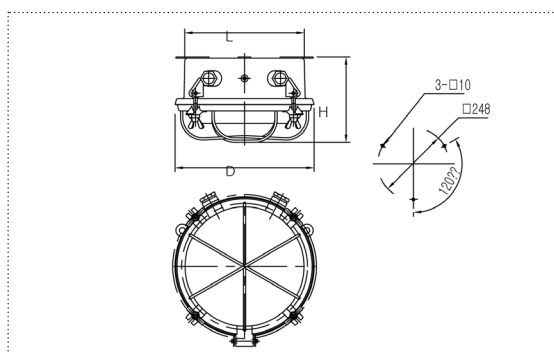
Finish

Powder coated white N-9.3
and enameled up to 70~80μm thickness

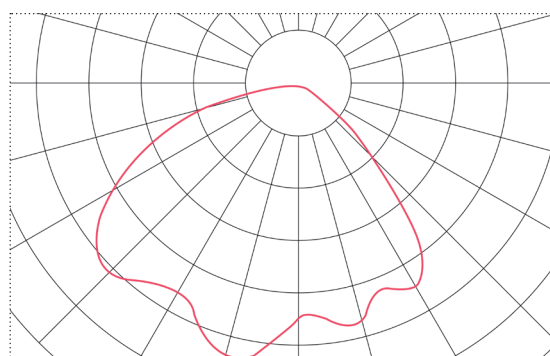
Specification

Light sources: 5/8W LED bulb
Lamp base: E27
Cable entry: 2 cable glands M24x1.5
(Max. diameter 17mm cable)
Mounting: 3 mounting holes, dia. 10mm
Voltage and frequency: AC100~220V, 50/60Hz

Technical Drawing



Light Distribution Curve



Model no. and Dimensions

Model no.	Capacity	L	D	H	Weight (kg)	Remark
		(mm)				
LEM-05WG-U	5W	206	240	145	3.1	
LEM-08WG-U	8W	206	240	145	3.1	

LEW-W

LED WALL LIGHT



Application

Workshops, Passage ways

Design

According to rules of maritime classification societies, additional IEC

Features

Protection degree: IP56

Materials

Body: Polycarbonate

Globe: Polycarbonate

Finish

Body: Blue green (Munsell N7.5BG7/2)
and stove enameled (Munsell No. N-9.3)

Specification

Light sources: 5/8W LED bulb

Lamp base: E27

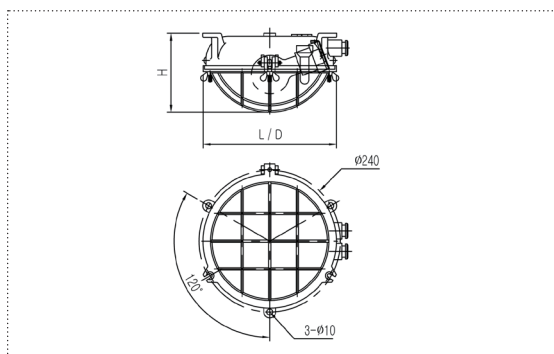
Cable entry: 2 cable glands M24x1.5

(Max. diameter 17mm cable)

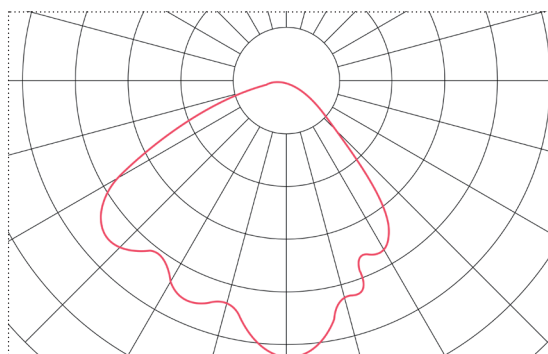
Mounting: 3 mounting holes, dia. 10mm

Voltage and frequency: AC100~220V, 50/60Hz

Technical Drawing



Light Distribution Curve



Model no. and Dimensions

Model no.	Capacity	L	D	H	Weight (kg)	Remark
		(mm)				
LEW-05WG	5W	227	227	134	0.54	
LEW-08WG	8W	227	227	134	0.54	



Application

Accommodation areas, lounge, public areas

Design

According to rules of maritime classification societies, additional IEC

Features

Flush
Protection degree: IP22

Materials

Housing: Electrolytic galvanized iron steel sheet deep drawn
Diffuser: Flat glass

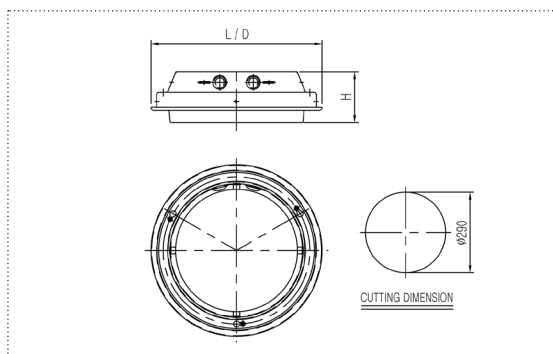
Finish

Powder coated white N-9.3
and enameled up to 70~80μm thickness

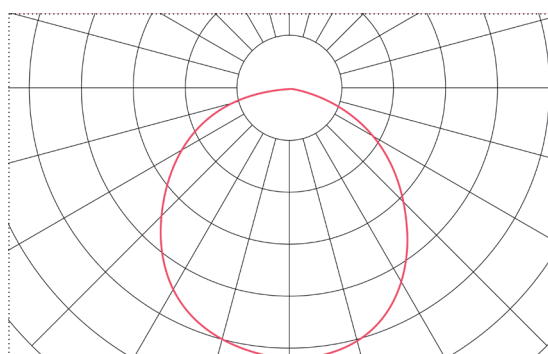
Specification

Light sources: 2/5/8W LED bulb
Lamp base: E27
Cable entry: 2 cable inlet holes
(Max. diameter 17mm cable)
Voltage and frequency: AC100~220V, 50/60Hz

Technical Drawing



Light Distribution Curve



Model no. and Dimensions

Model no.	Capacity	L	D	H	Weight (kg)	Remark
		(mm)				
LECF-02N	2W	310	310	92	0.54	
LECF-05N	5W	310	310	92	0.54	
LECF-08N	8W	310	310	92	0.54	

LEDN-N

LED DOWN LIGHT



Application

Accommodation areas, lounge, public areas

Design

According to rules of maritime classification societies

Features

Easy installation and maintenance
Flush
Brightness control by simplest dimmer
Protection degree: IP20

Materials

Housing: Electrolytic galvanized iron steel sheet spinning, seamless
Cover frame: Electrolytic galvanized iron steel sheet spinning, seamless
Reflector: Silver plate

Finish

Housing: Powder coated white N-9.3 and enameled up to 70~80μm thickness
Cover frame: Golden plated / Silver plated

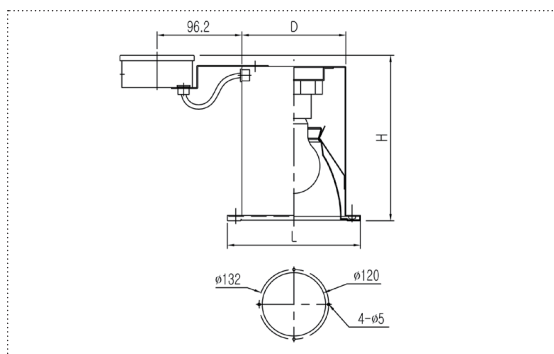
Specification

Light sources: 5/8W LED bulb
Lamp base: E27
Cable entry: 2 cable inlet holes (Max. diameter 17mm cable)
Mounting: 4 mounting holes, dia. 5mm
Voltage and frequency: AC100~220V, 50/60Hz

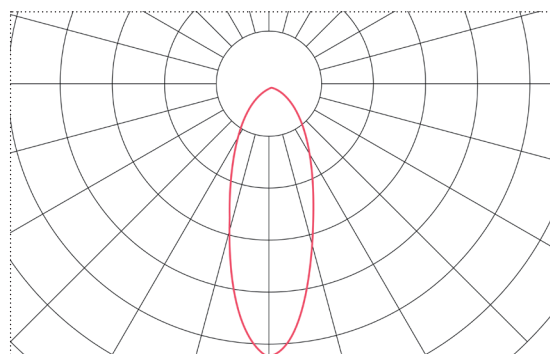
Optional

With terminal block box, With screen, With dimmer switch

Technical Drawing



Light Distribution Curve



Model no. and Dimensions

Model no.	Capacity	L	D	H	Weight (kg)	Remark
LEDN-05N	5W	152	118	193	0.58	
LEDN-08N	8W	152	118	193	0.58	
LEDN-05N-TB	5W	152	118	193	1.08	Terminal block box
LEDN-08N-TB	8W	152	118	193	1.08	Terminal block box

LEH-W

LED PORTABLE HAND LIGHT



Application

Engine room, workshops

Design

According to rules of maritime classification societies

Features

Protection degree: IP56

Portable type

Materials

Housing: Polycarbonate

Globe: Hard glass

Finish

Body: Blue green (Munsell N7.5BG7/2)

Guard: Clear

Specification

Light sources: 5/8W LED bulb

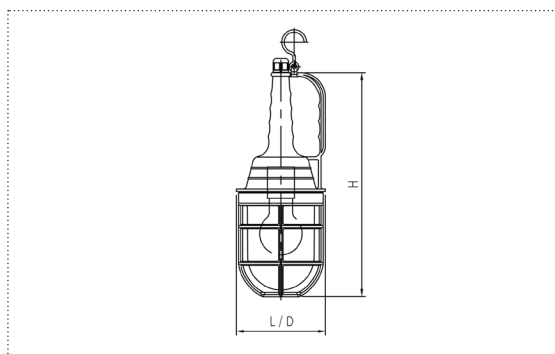
Lamp base: E27

Cable entry: 1 cable gland PG11

(Max. diameter 11mm cable)

Voltage and frequency: AC100~220V, 50/60Hz

Technical Drawing



Model no. and Dimensions

Model no.	Capacity	L	D	H	Weight (kg)	Remark
		(mm)				
LEH-05W	5W	126	126	330	1.05	
LEH-08W	8W	126	126	330	1.05	

LEDE-ND LED DECORATIVE WALL LIGHT



Application

Accommodation areas, public areas, dining, saloon

Design

According to rules of maritime classification societies

Features

2 tone color with dimmer

Guard

Protection degree: IP20

Materials

Body: Bronze plate

Diffuser: Opal glass

Finish

Body: Golden color plate

Diffuser: Opal

Specification

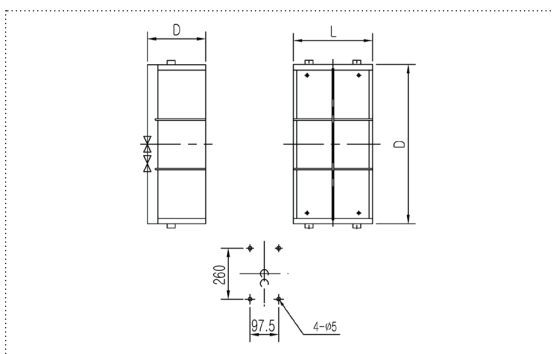
Light sources: 8.4W LED module

Cable entry: 2 cable inlet holes

Mounting: 4 mounting holes, dia. 5mm

Voltage and frequency: AC100~220V, 50/60Hz

Technical Drawing



Model no. and Dimensions

Model no.	Capacity	L	D	H	Weight (kg)	Remark
		(mm)				
LEDE-09ND	9W	150	110	300	1.8	



Application

Escape routes, directory signage

Design

According to rules of maritime classification societies

Features

Protection degree: IP20

Materials

Housing: Electrolytic galvanized iron steel sheet spinning, seamless

Sign: Polycarbonate plate with different images

Finish

Powder coated white N-9.3
and enameled up to 70~80µm thickness

Specification

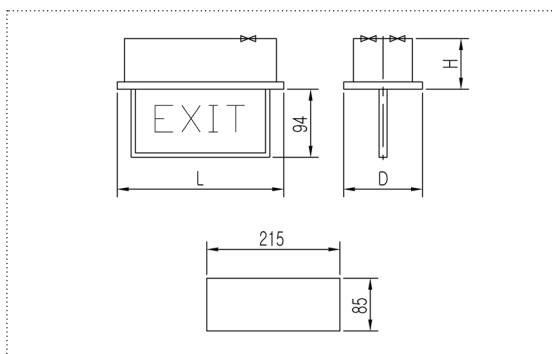
Light sources: 2.3W LED module

Mounting: 2 adjustable brackets

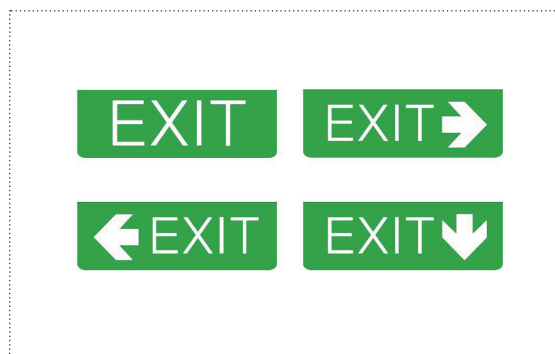
Voltage and frequency: AC100~220V, 50/60Hz



Technical Drawing



Signs



Model no. and Dimensions

Model no.	Capacity	L	D	H	Weight (kg)	Remark
		(mm)				
LEE-03NF	3W	230	105	60	1.8	

LEE-SS LED EXIT LIGHT



Application

Escape routes, directory signage

Design

According to rules of maritime classification societies

Features

Watertight multipurpose lighting fixtures
Battery backup
Surface
Protection degree: IP44

Materials

Housing: Electrolytic galvanized iron steel sheet
deep drawn
Connection Box: PBT (Poly Butylene Terephthalate)

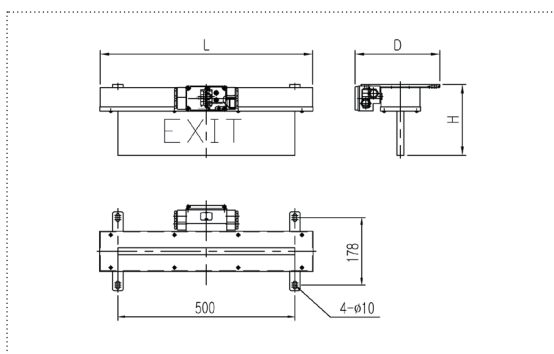
Finish

Powder coated white N-9.3
and enameled up to 70~80μm thickness

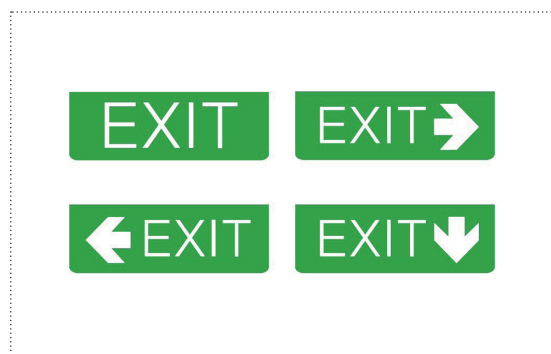
Specification

Light sources: 3.6W LED module
Cable entry: 4 cable glands M24x1.5
(Max. diameter 17mm cable)
Mounting: 4 mounting holes, dia. 10mm
Voltage and frequency: AC100~220V, 50/60Hz

Technical Drawing



Signs



Model no. and Dimensions

Model no.	Capacity	L	D	H	Weight (kg)	Remark
		(mm)				
LEE-05SS	5W	600	240	200	5.2	



Application

All vessels of 20M and above in length

Design

According to rules of maritime classification societies, additional in compliance with IMO 1972

Features

Protection degree: IP56

The body structure is hinged on the cable connection and maintenance is very easy.

Min. visibilities: 3NM (Masthead light: 6NM)

Huge vessel & dangerous cargo light:

P.C.B box unit required

Materials

Seawater resistant material

Frame & cover: Polycarbonate

Lens: Polycarbonate

Finish

Frame & cover: Mat black

Lens: Color lens

Specification

Light sources: 8/12W LED module

Cable entry: 1 cable gland M24x1.5

(Max. diameter 17mm cable)

Mounting: 4 mounting holes, dia. 11mm

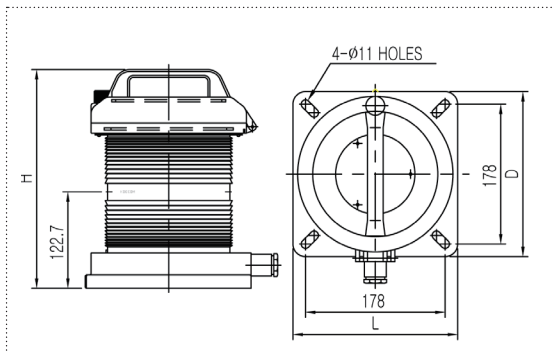
Voltage and frequency: AC100~220V, 50/60Hz

Optional

With 1.5M cable (TPNP-1.5)



Technical Drawing



Model no. and Dimensions

Model no.	Capacity	L	D	H	Weight (kg)	Description	Remark
		(mm)					
LENM2A-S12W	12W	210	210	278.4	2.01	Masthead	White(225°)
LENS2A-S03W	8W	210	210	278.4	2.13	Stern	White(135°)
LENY2A-S03Y	8W	210	210	278.4	2.13	Stern towing	Yellow(135°)
LENP2A-S04R	8W	210	210	278.4	2.15	Port side	Red(112.5°)
LENT2A-S05G	8W	210	210	278.4	2.15	Starboard side	Green(112.5°)
LENA2A-S05W	8W	210	210	278.4	1.82	All round white	White(360°)
LENU2A-S04R	8W	210	210	278.4	1.82	All round red	Red(360°)
LENF2A-S07G	8W	210	210	278.4	1.82	All round green	Green(360°)
LENF2A-S03Y	8W	210	210	278.4	1.82	All round yellow	Yellow(360°)
LENV-S08W	12W	210	210	278.4	1.82	Manoeuvring	White(360°)

LESL-C / LESL-S

LED SUEZ / PANAMA CANAL SIGNAL LIGHT



Application

Ship's passage for Suez/Panama canal

Design

According to rules of maritime classification societies

Features

Protection degree: IP56

The body structure is hinged on the cable connection and maintenance is very easy

Materials

Body & frame: Cast brass

Globe: Glass

Finish

Body & frame: Natural

Globe: General warning function in different colors

Specification

Light sources: 5W LED module

Cable entry: 1 cable gland M24x1.5

(Max. diameter 17mm cable)

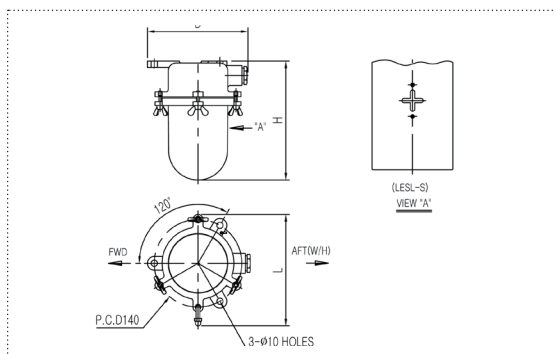
Mounting: 3 mounting holes, dia. 10mm

Voltage and frequency: AC100~220V, 50/60Hz

Optional

With dimmer switch for Panama steering light

Technical Drawing



Model no. and Dimensions

Model no.	Capacity	L	D	H	Weight (kg)	Remark
		(mm)				
LESL-C05WA	5W	178	162	190	1.60	White
LESL-C05WR	5W	178	162	190	1.60	Red
LESL-C05WG	5W	178	162	190	1.60	Green
LESL-S05WB	5W	178	162	190	1.65	Blue

LED SL-A

LED DAY TIME SIGNAL LIGHT



Application

Inside and outside

Design

According to rules of SOLAS

Features

Protection degree: IP44 (JIS F 8007)

With compartment for the search light and side compartment for 2 color filters (Red & green)

Materials

Body: Aluminum

Reflector: High polished glass

Finish

Body: Mat black

Specification

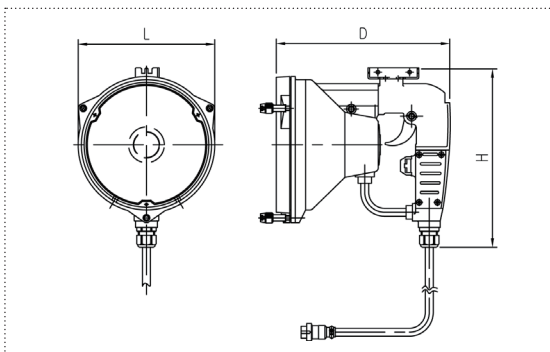
Light sources: 15W LED module

With captive cord: 10M

Voltage and frequency: 24V are standard



Technical Drawing



Model no. and Dimensions

Model no.	Capacity	L	D	H	Weight (kg)	Remark
		(mm)				
LED SL-15A	15W	173	242	232	2.7	
LED SL-15ABC	15W	173	242	232	11.8	Battery & Battery Charger



KOREA HEAD OFFICE & FACTORY

1509-12, DADAE-DONG, SAHA-GU, BUSAN, KOREA
TEL: + 82-51-266-0050 • FAX: +82-51-265-0985

YEOSU BRANCH OFFICE

476-1, DUNDUCK-DONG, YEOSU, JEONNAM, KOREA
TEL: +82-61-642-0050 • FAX: +82-61-651-0051

CHINA DALIAN HEAD OFFICE & FACTORY

#49, GUSHAN STREET, DAGUSHAN, DEVELOPMENT ZONE, DALIAN, CHINA
TEL: +86-411-39218000 • FAX: +86-411-39218008

CHINA SHANGHAI OFFICE

701 WORLD TRADE TOWER
TEL: +86-21-63620566 • FAX: +86-21-63606659